

**in**impulse



**in**impulse

**Impulse (Qingdao) Health Tech Co., Ltd.**

Add: No. 369 Huashan 2nd road, Jimo, Qingdao, P.R.C.

Tel: 0086 532 85793158 or 0086 532 83958616

Fax: 0086 532 83958619

<http://www.impulsefitness.com>

<http://impulsefitness.en.alibaba.com>

E-mail: [sales@impulsefitness.com](mailto:sales@impulsefitness.com)

**CARDIO**  
SERIES

# Wellness Collection

PROFESSIONAL EDITION

# INTRODUCTION

## The Way to Wellness

Since our beginning in 1975, Impulse Health Tech has specialized in design, production and marketing of fitness equipment. In our 39 years of business, we adhere to our commitment to product innovation, superior value, and unmatched customer service which has successfully made Impulse a leading manufacturer and developer of fitness equipment. Impulse brand has been sold across almost 100 countries and are marketed to the commercial, light commercial and home-use markets, and our company is ISO9001:2000, ISO14001, ISO10015 and OHSAS 18001 certified.

Impulse also has more than 20 years OEM business experience, manufacturing fitness equipment for world leading fitness brands.

In May 2012, Impulse finished recapitalization dramatically and enter partnership with Beijing Olympic Games exclusive equipment supplier, and both sides will work together in investment, manufacture, technological innovation and marketing development. We believe that this cooperation is going to invent a new era in fitness world.

To learn more information about our company, please visit our global corporate site <http://eng.impulsefitness.com/>.

## Why Impulse:

- 39 years of experience manufacturing fitness equipment has established Impulse as the largest fitness equipment brand in China!
- OEM manufacture for world leading brands.
- Offering complete packages with a commercial grade focus at a competitive price.
- Critical components are selected from reputable and reliable international sources.
- Strong R&D department with over 60 electrical and mechanical engineers.
- Utilize industrial designers from the USA and European to participate in our product development.
- Impulse branded equipment is currently being used in over thousands of gyms worldwide.
- Located in a world class harbor city that has convenient transportation and daily ocean freights to worldwide ports.

# CARDIO SERIES



**R** is for reinvent and reassure, designed specifically for those looking for solid, commercial quality under sleek and modern appearance, R series put our best into the package.

R series reinvent our cardio line-up with the whole new looks, yet reassures our clients with popular user-focused features like ultra-thick running belts, personal fans, wrap-around seat adjusts, dual-platform pedals, and much more.

R series go beyond with our latest platform of user interface, and entertainment components. It will give you many more features you'd never expect to find from the others.

# CARDIO FAMILY



*impulse pro*  
**500**  
SERIES

500 SERIES CARDIO



*impulse pro*  
**700**  
SERIES

700 SERIES CARDIO

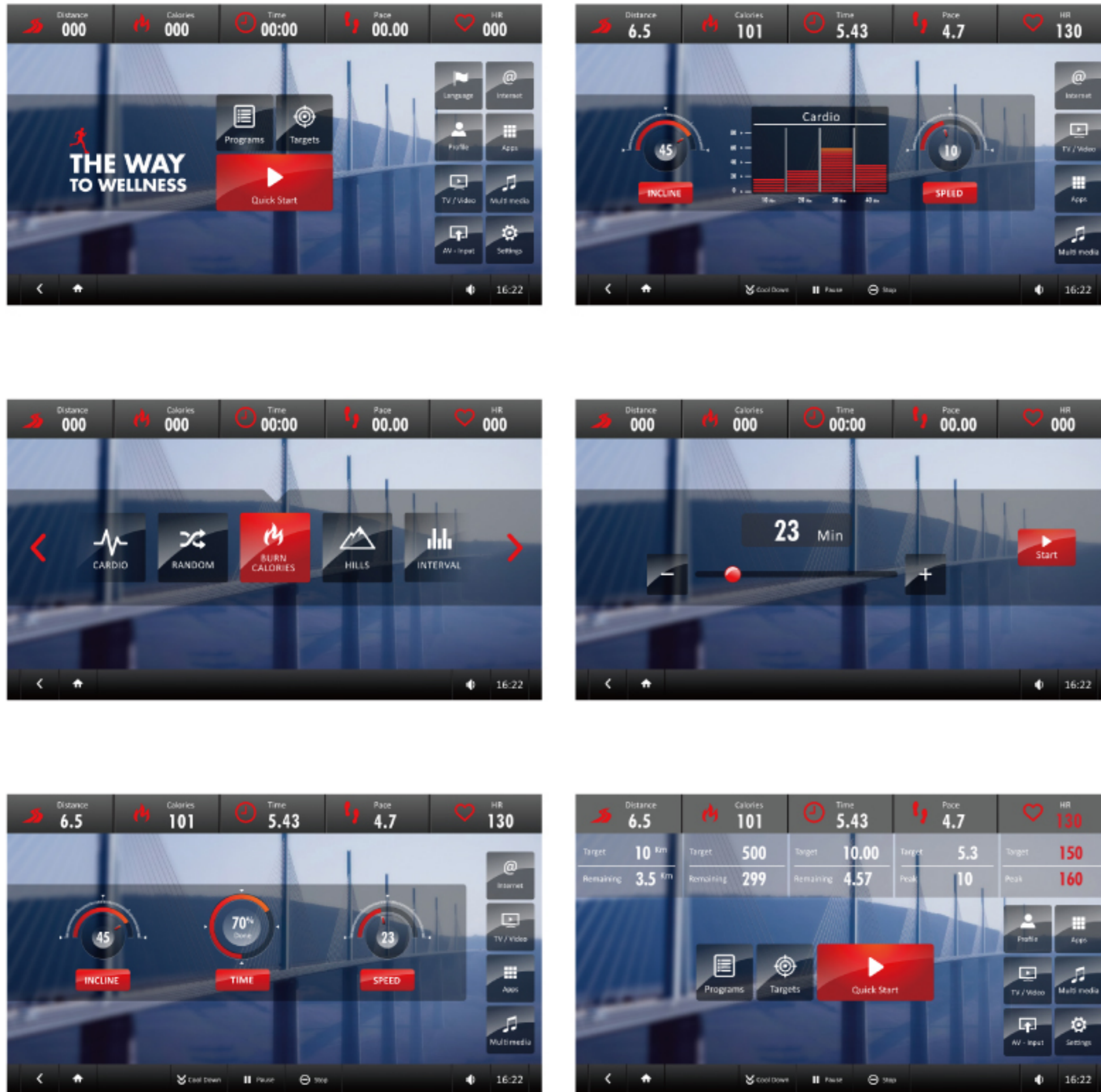


*impulse pro*  
**900**  
SERIES

900 SERIES CARDIO



# R900 TOUCH-SCREEN Console System



R900 console is all about making it easy for the users, simple and focused, featuring latest and fitness workouts at your fingertips.

R900 console also offers users a rich entertainment experience, including internet, apps and multi-media (image, music&video).

## NEW GADGETS



Smart Phone Charger



Program Upgrade Kit



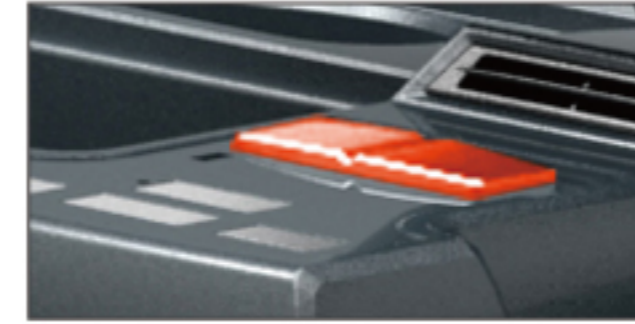
**RT500**  
TREADMILL



**RT700**  
TREADMILL



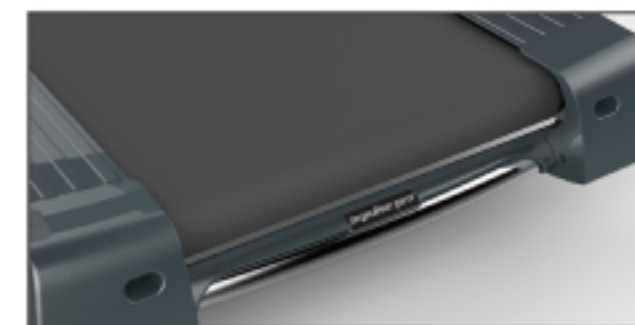
**RT900**  
TREADMILL



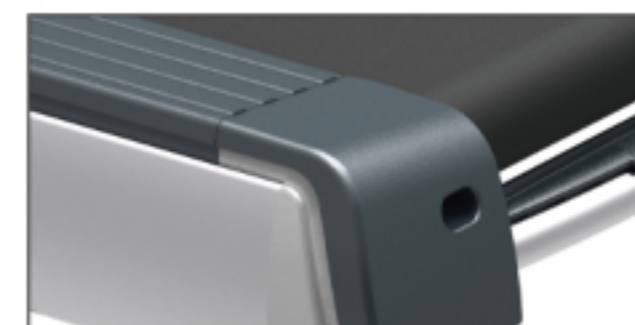
Integrated three-speed personal fan with control switch in the activity zone makes every workout easier.



On-your-finger-tips speed and incline controls on ergonomically designed handle bars keep controls within easy reach.



Pulflex™ impact absorption system provides the ultimate running feel for all users.



Cast-aluminum end caps are equipped for lasting durability and integrity. Transportation handle bars are conveniently located on the back for easy moving.



RT500 FEATURES & SPECS	
<b>CONSOLE</b>	
Console Window	7 Window + Dot Matrix
Program Instant Key	Yes
Numeric Keypad	No
Workouts	11
Display Readouts	7
Entertainment	N/A
<b>UNIT SELECTION</b>	
Metric	Yes
English	Yes
<b>HEART RATE MONITORING</b>	
Contact	Standard
Telemetry	Standard
<b>DRIVE SYSTEM</b>	
Moto And Motor Controller	Continuous 3HP AC Motor Peak 5 HP
<b>FEATURES</b>	
Activity-Zone Control	Cooldown, start, stop, incline and speed controls, fan and contact heart rate
Frame	2 step powder-coating with rust-resistant undercoat
Deck Type	Reversible 1" deck
Belt Type	Sieling 2 ply commercial grade
Running Area	22"x60"
Cushion System	Pulflex™ commercial cushioning system
Deck Step Height	218mm (8.5")
Incline Range	0-15%
Speed Range	0.8-20Km/h (0.5-12mph)
Rollers	3"
Integrated Transportation Wheels	Yes
Hand Rail Safety Light	No
Accessory Tray & Cup Holder	Yes
<b>TECH SPECS</b>	
Overall Dimensions	2078x878x1500mm / 82"x35"x59"
Maximum User Weight	180Kg / 350Lbs
Weight	195Kg / 429Lbs
Shipping Weight	255Kg / 561Lbs
Carton Cubic Size	2180x935x400mm / 86"x37"x15.8"
Carton Cubic Size	925x880x255mm / 36"x35"x10"
Container Count	60
Electrical Receptacle & Plug	NEMA 5-20R 120V / 200-240V
Electrical Requirement	20/15 amps-dedicated circuit required-non-looped grounded
<b>REGULATORY</b>	
ETL	Yes
CE	Yes
EN957	Yes
<b>WARRANTY</b>	
Frame	*
Parts (Mechanical & Electronic)	2
Wear Items	1

RT700 FEATURES & SPECS	RT900 FEATURES & SPECS
7 Window + Dot Matrix	12" High Definition TFT Touch Screen
Yes	Yes
Yes	Yes
11	11
7	7
N/A	Earphone Jack (output), AV Input, Portable Device Media Playback (Multi-format Music & Video)
Yes	Yes
Yes	Yes
Standard	Standard
Polar	Polar
Continuous 4HP AC Motor Peak 6 HP	Continuous 4HP AC Motor Peak 6 HP
Cooldown, start, stop, on-your-finger-tips incline & speed control, fan and contact hear rate on ergonomic handle bars	Cooldown, start, stop, on-your-finger-tips incline & speed control, fan and contact hear rate on ergonomic handle bars
2 step powder-coating with rust-resistant undercoat	2 step powder-coating with rust-resistant undercoat
Hard-wax resersable 1" deck	Hard-wax resersable 1" deck
Habasit 2 ply commercial grade (maintenance free)	Habasit 2 ply commercial grade (maintenance free)
22"x60"	22"x60"
Pulflex™ commercial cushioning system	Pulflex™ commercial cushioning system
218mm (8.5")	218mm (8.5")
0-15%	0-15%
0.8-25Km/h (0.5-15mph)	0.8-25Km/h (0.5-15mph)
3"	3"
Yes	Yes
Yes	Yes
Yes	Yes
2078x878x1500mm / 82"x35"x59"	2078x878x1500mm / 82"x35"x59"
200Kg / 440Lbs	200Kg / 440Lbs
195Kg / 429Lbs	195Kg / 429Lbs
255Kg / 561Lbs	255Kg / 561Lbs
2180x935x400mm / 86"x37"x15.8"	2180x935x400mm / 86"x37"x15.8"
925x880x255mm / 36"x35"x10"	925x880x255mm / 36"x35"x10"
60	60
NEMA 5-20R 120V / 200-240V	NEMA 5-20R 120V / 200-240V
20/15 amps-dedicated circuit required-non-looped grounded	20/15 amps-dedicated circuit required-non-looped grounded
Yes	Yes
Yes	Yes
Yes	Yes
7	7
2	2
1	1

\* Light commercial warranty, 6 hours of use or less daily.

\* Specifications subject to change.



**RE500**  
ELLIPTICAL



**RE700**  
ELLIPTICAL



**RE900**  
ELLIPTICAL



On-your-finger-tips resistance and incline controls on ergonomically designed handle bars keep controls within easy reach.



Oversized bottle holder plus towel hanger ensure users' bottle and towels are easy to reach at all times.



Users can alter the height of the elliptical path their foot travels. Precision extruded aluminum rails offer smooth and natural motion.



Easy to service shroud designs convenient maintenance.



Ergonomic multi position dual action handlebars allow users to target specific muscle groups and total-body workout.

RE500 FEATURES & SPECS	
<b>CONSOLE</b>	
Console Window	7 Window + Dot Matrix
Program Instant Key	Yes
Numeric Keypad	No
Workouts	11
Display Readouts	7
Entertainment	N/A
<b>UNIT SELECTION</b>	
Metric	Yes
English	Yes
<b>HEART RATE MONITORING</b>	
Contact	Standard
Telemetry	Standard
<b>FEATURES (BASIC)</b>	
Stride Length	21"
Resistance Levels	20
Brake	Self powered hybrid brake
Resistance Brake Power	350W
Moving Handlebars	Dual action handlebars
Stationary Handlebars	Contact heart rate handles
Frame	2 step powder-coating with rust-resistant undercoat
Pedals	Pedals with cushioned gel pads
Pedal Spacing	1"
Step-up Height	190mm (7.5")
Integrated Transportation Wheels	Yes
Accessory Tray & Cup Holder	Cup holder
<b>TECH SPECS</b>	
Overall Dimensions L*W*H	2108×675×1686mm / 83"×26.6"×66.4"
Maximum User Weight	160Kg / 350Lbs
Weight	120Kg / 265Lbs
Shipping Weight	170Kg / 375Lbs
Carton Cubic Size	2200×650×960mm / 86.6"×25.6"×37.8"
Container Count	36
<b>REGULATORY</b>	
ETL	Yes
CE	Yes
EN957	Yes
<b>WARRANTY</b>	
Frame	7
Parts (Mechanical & Electronic)	2
Wear Items	1

RE700 FEATURES & SPECS	RE900 FEATURES & SPECS
7 Window + Dot Matrix	12" High Definition TFT Touch Screen
Yes	Yes
Yes	Yes
11	11
7	7
N/A	Earphone Jack (output), AV Input, Portable Device Media Playback (Multi-format Music & Video)
Yes	Yes
Yes	Yes
Standard	Standard
Polar	Polar
21"	21"
20	20
Self powered hybrid brake	Self powered hybrid brake
450W	450W
Overmolded ergonomic multi position dual action handlebars	Overmolded ergonomic multi position dual action handlebars
Ergonomic contact heart rate handles with on-your-finger-tips switches	Ergonomic contact heart rate handles with on-your-finger-tips switches
2 step powder-coating with rust-resistant undercoat	2 step powder-coating with rust-resistant undercoat
Pedals with cushioned gel pads	Pedals with cushioned gel pads
1"	1"
190mm (7.5")	190mm (7.5")
Yes	Yes
Cup holder with towel hanger	Cup holder with towel hanger
2108×675×1686mm / 83"×26.6"×66.4"	2108×675×1686mm / 83"×26.6"×66.4"
160Kg / 350Lbs	160Kg / 350Lbs
140Kg / 309Lbs	140Kg / 309Lbs
190Kg / 419Lbs	190Kg / 419Lbs
2200×650×960mm / 86.6"×25.6"×37.8"	2200×650×960mm / 86.6"×25.6"×37.8"
36	36
Yes	Yes
Yes	Yes
Yes	Yes
*	*
7	7
2	2
1	1

\* Light commercial warranty, 6 hours of use or less daily.

\* Specifications subject to change.



**RU500**  
UPRIGHT BIKE



**RU700**  
UPRIGHT BIKE



**RU900**  
UPRIGHT BIKE



On-your-finger-tips resistance switches and additional contact heart rates offers most convenient workout control and data capturing.



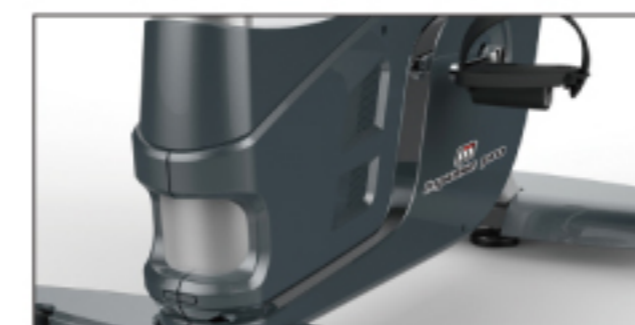
Ergonomically designed handle bars offer three riding positions: racing, cruising, and upright.



Oversized cranks and two-sided pedals offers durability and accommodation to feet in all sizes.



K.O.P.S. biomechanics is designed to ensure proper form and ultimate comfort.



Easy to service shroud and crank cover designs convenient maintenances.

RU500 FEATURES & SPECS	
<b>CONSOLE</b>	
Console Window	7 Window + Dot Matrix
Program Instant Key	Yes
Numeric Keypad	No
Workouts	11
Display Readouts	7
Entertainment	N/A
<b>UNIT SELECTION</b>	
Metric	Yes
English	Yes
<b>HEART RATE MONITORING</b>	
Contact	Standard
Telemetry	Standard
<b>FEATURES</b>	
Handlebars	3 riding positions, with contact heart rate grips
Frame	2 step powder-coating with rust-resistant undercoat
Resistance Levels	20
Brake	Self powered hybrid brake
Resistance Brake Power	350W
Crank	Standard
Pedals	Single sided weighted pedal
Integrated Transport Wheels	Yes
Cup Holder	Yes
Step Through Anti-Skid	N/A
<b>TECH SPECS</b>	
Overall Dimension	1090x660x1490mm / 43"x26"x59"
Maximum User Weight	160Kg / 350Lbs
Weight	63.2Kg / 139Lbs
Shipping Weight	81Kg / 179Lbs
Carton Cubic Size	1160x405x870mm / 46"x16"x34"
Container Count	172 Sets
<b>REGULATORY</b>	
ETL	Yes
CE	Yes
EN957	Yes
<b>WARRANTY</b>	
Frame	7
Parts (Mechanical & Electronic)	2
Wear Items	1

\* Specifications subject to change.

RU700 FEATURES & SPECS	RU900 FEATURES & SPECS
7 Window + Dot Matrix	12" High Definition TFT Touch Screen
Yes	Yes
Yes	Yes
11	11
7	7
N/A	Earphone Jack (output), AV Input, Portable Device Media Playback (Multi-format Music & Video)
Yes	Yes
Yes	Yes
Standard	Standard
Polar	Polar
3 riding positions, with two sets of contact heart rates grips and on-your-finger-tips control	3 riding positions, with two sets of contact heart rates grips and on-your-finger-tips control
2 step powder-coating with rust-resistant undercoat	2 step powder-coating with rust-resistant undercoat
20	20
Self powered hybrid brake	Self powered hybrid brake
450W	450W
Oversized	Oversized
Oversized dual-sided pedals with integrated straps	Oversized dual-sided pedals with integrated straps
Yes	Yes
Yes	Yes
N/A	N/A
1090x660x1490mm / 43"x26"x59"	1090x660x1490mm / 43"x26"x59"
160Kg / 350Lbs	160Kg / 350Lbs
67Kg / 151Lbs	67Kg / 151Lbs
84.8Kg / 186Lbs	84.8Kg / 186Lbs
1160x405x870mm / 46"x16"x34"	1160x405x870mm / 46"x16"x34"
172 Sets	172 Sets
Yes	Yes
Yes	Yes
Yes	Yes
7	7
2	2
1	1



**RR500**  
RECUMBENT BIKE



**RR700**  
RECUMBENT BIKE





**RR900**  
RECUMBENT BIKE



Wrap-around seat adjustment allows position changes either on or off the bike.



Oversized cranks and two-sided pedals offers durability and accommodation to feet in all sizes.



Ergonomically designed seat-side handles with on-your-finger-tips resistance switches and contact heart rates offers most convenient workout control and data capturing.



Step-through design allows easy entry and exit with a small 120mm step-over height.



Easy to service shroud and crank cover designs convenient maintenances.

RR500 FEATURES & SPECS	
<b>CONSOLE</b>	
Console Window	7 Window + Dot Matrix
Program Instant Key	Yes
Numeric Keypad	No
Workouts	11
Display Readouts	7
Entertainment	N/A
<b>UNIT SELECTION</b>	
Metric	Yes
English	Yes
<b>HEART RATE MONITORING</b>	
Contact	Standard
Telemetry	Standard
<b>FEATURES</b>	
Handlebars	Ergonomically designed seat-side handles with contact heart rate grips on-your-finger-tips control
Frame	2 step powder-coating with rust-resistant undercoat
Resistance Levels	20
Brake	Self powered hybrid brake
Resistance Brake Power	350W
Crank	Standard
Pedals	Single sided weighted pedal
Integrated Transport Wheels	Yes
Cup Holder	Yes
Step Through Anti-Skid	No
<b>TECH SPECS</b>	
Overall Dimension	1650x650x1370mm / 65"x26"x54"
Maximum User Weight	160Kg / 350Lbs
Weight	79Kg / 174Lbs
Shipping Weight	100.7Kg / 222Lbs
Carton Cubic Size	1615x380x850mm / 63.6"x15"x33.5"
Container Count	129 Sets
<b>REGULATORY</b>	
ETL	Yes
CE	Yes
EN957	Yes
<b>WARRANTY</b>	
Frame	7
Parts (Mechanical & Electronic)	2
Wear Items	1

\* Specifications subject to change.

RR700 FEATURES & SPECS	RR900 FEATURES & SPECS
7 Window + Dot Matrix	12" High Definition TFT Touch Screen
Yes	Yes
Yes	Yes
11	11
7	7
N/A	Earphone Jack (output), AV Input, Portable Device Media Playback (Multi-format Music & Video)
Yes	Yes
Yes	Yes
Standard	Standard
Polar	Polar
Ergonomically designed seat-side handles with contact heart rate grips on-your-finger-tips control	Ergonomically designed seat-side handles with contact heart rate grips on-your-finger-tips control
2 step powder-coating with rust-resistant undercoat	2 step powder-coating with rust-resistant undercoat
20	20
Self powered hybrid brake	Self powered hybrid brake
450W	450W
Oversized	Oversized
Oversized dual-sided pedals with integrated straps	Oversized dual-sided pedals with integrated straps
Yes	Yes
Yes	Yes
Yes	Yes
1650x650x1370mm / 65"x26"x54"	1650x650x1370mm / 65"x26"x54"
160Kg / 350Lbs	160Kg / 350Lbs
83Kg / 182Lbs	83Kg / 182Lbs
104.6Kg / 228Lbs	104.6Kg / 228Lbs
1615x380x850mm / 63.6"x15"x33.5"	1615x380x850mm / 63.6"x15"x33.5"
129 Sets	129 Sets
Yes	Yes
Yes	Yes
Yes	Yes
7	7
2	2
1	1



# CARDIO SERIES





**PT300**  
TREADMILL



**PT400**  
TREADMILL

## TREADMILL FEATURES & SPECS

ITEM NO.	PT300 COMMERCIAL TREADMILL	PT400 COMMERCIAL TREADMILL
<b>USER WEIGHT CAPACITY</b>	150Kg / 330Lbs	180Kg / 396Lbs
<b>RUNNING SURFACE</b>	508x1524mm / 20"x60"	508x1524mm / 20"x60"
<b>WORKING SIZE / WEIGHT</b>	LxWxH: 2136x934x1450mm / 84"x36.7"x60.6" Wt: 209Kg / 461Lbs	LxWxH: 2136x934x1450mm / 84"x36.7"x60.6" Wt: 215Kg / 474Lbs
<b>CARTON CUBIC SIZE</b>	LxWxH: 2200x990x650mm / 86.6"x39"x25.6" 40' HQ fits 48 Sets	LxWxH: 2200x990x650mm / 86.6"x39"x25.6" 40' HQ fits 48 Sets
<b>COLOR</b>	Frame: Platinum. Shroud: Dark Grey and Accents: N/A	Frame: Platinum. Shroud: Dark Grey and Accents: N/A
<b>STEP-UP HEIGHT</b>	258.5mm / 10"	258.5mm / 10"
<b>MOTOR DRIVE</b>	Continuous 3HP AC Motor, Peak HP: 5HP	Continuous 4HP AC Motor, Peak HP: 6HP
<b>ELECTRICAL</b>	110 / 220 volts with a cord of 3Cx2000mm (78.7")x1.5mm <sup>2</sup>	110 / 220 volts with a cord of 3Cx2000mm (78.7")x1.5mm <sup>2</sup>
<b>CERTIFICATION</b>	CE	CE
<b>SUSPENSION</b>	Double cell neoprene rubber system with 1" thick fiberboard	Double cell neoprene rubber system with 1" thick fiberboard. Self lubricate at 1000Km (625miles) frequency
<b>ROLLER</b>	76.2mm (3") sealed bearing	76.2mm (3") sealed bearing
<b>INCLINE RANGE</b>	0-15% at 1% increment	0-15% at 1% increment
<b>SPEED RANGE</b>	1-20 Km/h (12.5mph) in 0.1 Km/h (0.1mph) increments	1-25 Km/h (15.6mph) in 0.1 Km/h (0.1mph) increments
<b>HR MONITORING</b>	Contact Heart Rate System and wireless	Contact Heart Rate System and wireless
<b>DISPLAY</b>	6 Windows Dot Matrix LED	7" LCD
<b>READOUTS</b>	Speed and incline, time elapsed, calories, calories/hour, pace (min/km or mile), distance, course profile, heart rate, heart rate tracking, 1/4 mile or 400 meters motivational track, laps completed, etc.	Speed and incline, time elapsed, calories, calories/hour, pace (min/km or mile), distance, course profile, heart rate, heart rate tracking, 1/4 mile or 400 meters motivational track, laps completed, etc.
<b>PROGRAMES</b>	4 preset, 3 custom and 2 user programe, Quick start funtion	4 preset, 3 HRC and 2 user programe, Quick start funtion
<b>FEATURES</b>	Personal cooling fan, safety lockout control, One-touch™ speed & incline, belt logo optional, intergrated surge protector, easy adjust roller, easy disgnostics, easy deck cleaning, etc.	Personal cooling fan, safety lockout control, One-touch™ speed & incline, belt logo optional, intergrated surge protector, easy adjust roller, easy disgnostics, easy deck cleaning, easy lube, etc.



**PE350**  
ELLIPTICAL



**PST300**  
STEPPER

## ELLIPTICAL FEATURES & SPECS

<b>ITEM NO.</b>	PE350 COMMERCIAL ELLIPTICAL
<b>USER WEIGHT CAPACITY</b>	160Kg / 350Lbs
<b>WORKING SIZE / WEIGHT</b>	2110x650x1640mm / 83"x25.6"x64.6" Wt: 124Kg / 273Lbs
<b>CARTON CUBIC SIZE</b>	1880x680x1190mm / 74"x26.8"x46.9" 40' HQ container holds 34 Sets
<b>COLOR</b>	Frame: Platinum. Shroud: Platinum. Accents: Dark Grey
<b>STEP-UP HEIGHT</b>	210mm / 8.3"
<b>PEDAL SIZE</b>	350x165mm / 13.8"x6.5" open ended PU soft pad pedal
<b>PEDAL DISTANCE</b>	112.5mm / 4.4"
<b>BRAKE RESISTANCE</b>	Min/Max: 42/350 watts at 60 pedal RPM, 20 levels of intensity
<b>BALL BEARING</b>	NTN bearings are used on crank and idler
<b>ELECTRICAL</b>	Self-generating power supply
<b>CERTIFICATION</b>	CE
<b>HR MONITORING</b>	Heartrate telemetry and contact heart rate system
<b>DISPLAY</b>	3 Windows Dot Matrix LED
<b>READOUTS</b>	Watts, speed and time, calories, calories/hour, RPM, distance, course profile, heart rate, heart rate tracking, 1/4 mile or 400 meters motivational track, laps completed, etc.
<b>PROGRAMES</b>	6 (Manual, Random, CV, Pulse, Lose weight, Mountain Climbing); 2 sets Users profiles; Quick Start program
<b>FEATURES</b>	Transportion wheel

## STEPPER FEATURES & SPECS

<b>ITEM NO.</b>	PST300 COMMERCIAL STEPPER
<b>USER WEIGHT CAPACITY</b>	160Kg / 350Lbs
<b>WORKING SIZE / WEIGHT</b>	1265x855x1650mm / 60"x33.6"x65" Wt: 87Kg / 192Lbs
<b>CARTON CUBIC SIZE</b>	1185x910x760mm / 46.6"x36"x30" 40' HQ container holds 67 Sets
<b>COLOR</b>	Frame: Platinum. Shroud: Platinum. Accents: Dark Grey
<b>STEP RANGE OF MOTION</b>	330mm / 13"
<b>PEDAL SIZE</b>	365x165mm / 14"x6.5" open ended pedal
<b>PEDAL DISTANCE</b>	78mm / 3"
<b>BRAKE RESISTANCE</b>	Min/Max: 42/450 watts, 20 levels of intensity
<b>ELECTRICAL</b>	Self-generating power supply
<b>CERTIFICATION</b>	CE
<b>BALL BEARING</b>	INA (Germany)
<b>HR MONITORING</b>	Heartrate telemetry and contact heart rate system
<b>DISPLAY</b>	3 Windows Dot Matrix LED
<b>READOUTS</b>	Watts, speed and time, calories, calories/hour, RPM, distance, course profile, heart rate, heart rate tracking, 1/4 mile or 400 meters motivational track, laps completed, etc.
<b>PROGRAMES</b>	6 (Manual, Cardio, Fatburn, Pulse, Thigh oner, Glute Sculpter); 2 sets Users profiles; Quick Start program
<b>FEATURES</b>	Transportion wheel, Height adjustment



**PU300**  
UPRIGHT BIKE



**PR300**  
RECUMBENT BIKE

## BIKE FEATURES & SPECS

ITEM NO.	PU300 COMMERCIAL UPRIGHT BIKE	PR300 COMMERCIAL RECUMBENT BIKE
<b>USER WEIGHT CAPACITY</b>	160Kg / 350Lbs	160Kg / 350Lbs
<b>WORKING SIZE</b>	1650x670x1150mm / 65"x26"x45"	1640x670x1390mm / 65" x26"x55"
<b>PACKAGING</b>	Double boxed packaging to minimize cubic size, a 40' container can hold 215 units	Double boxed packaging to minimize cubic size, a 40' container can hold 104 units
<b>OVERALL WEIGHT</b>	59.5Kg / 132Lbs	85Kg / 187Lbs
<b>COLOR</b>	Industrial silver frame, silver grey shroud, black accents	Industrial silver frame, silver grey shroud, black accents
<b>PEDALS / CRANK</b>	4-piece crank with sealed bearings, weighted pedal with skate-style clip	3-piece crank with sealed bearings, weighted pedal with skate-style clip
<b>BRAKE RESISTANCE</b>	350 watts at 60 pedal RPM, 20 levels of intensity	350 watts at 60 pedal RPM, 20 levels of intensity
<b>BALL BEARING</b>	TPI bearings are used on crank and idler	TPI bearings are used on crank and idler
<b>ELECTRICAL</b>	Self-generating power supply	Self-generating power supply
<b>CERTIFICATION</b>	CE	CE
<b>HR MONITORING</b>	Heartrate telemetry and contact heart rate system	Heartrate telemetry and contact heart rate system
<b>DISPLAY</b>	3 Windows Dot Matrix LED	3 Windows Dot Matrix LED
<b>READOUTS</b>	Watts, speed and time, calories, calories/hour, METS, RPM, distance, course profile, heart rate, heart rate tracking, 1/4 mile or 400 meters motivational track, laps completed	Watts, speed and time, calories, calories/hour, METS, RPM, distance, course profile, heart rate, heart rate tracking, 1/4 mile or 400 meters motivational track, laps completed
<b>PROGRAMS</b>	6 pre-set programs, 3 HRC programs, 2 custom programs, and quick start	6 pre-set programs, 3 HRC programs, 2 custom programs, and quick start
<b>FEATURES</b>	Walk-through design, ratcheting easy seat adjust, accessory tray and bottle holder, etc.	Walk-through design, wrap-around seat adjust, fold-away armrest, accessory tray and bottle holder, etc.



**PS300**  
INDOOR GROUP CYCLE



CONSOLE



**INDOOR GROUP CYCLE FEATURES & SPECS**

ITEM NO.	PS300 COMMERCIAL INDOOR GROUP CYCLE
USER WEIGHT CAPACITY	150Kg / 330Lbs
WORKING SIZE	1200x530x1110mm / 47.2"x20.9"x43.7"
PACKAGING	1100x330x870mm / 43.3"x13"x34.3" carton size, a 20' / 40GP/ 40HC container can hold 83.170/222 units respectively
OVERALL WEIGHT	58Kg / 128Lbs
FLYWHEEL WEIGHT	20Kg / 43Lbs
COLOR	Silver grey frame, dark grey shroud, black accents
CERTIFICATION	GS, CE, ROHS
FEATURES	Rubber coated handbars makes user feel more comfortable. Micro-adjustable fore and aft seat slider, dual-sided SPD pedal, bottle holder, one motion emergency stop, commercial uses durable and reliable (Spline fit) bottom bracket. Cordless console is optional etc.



PS300



PS303



**EXPLOIT**  
INDOOR GROUP CYCLE

**INDOOR GROUP CYCLE FEATURES & SPECS**

ITEM NO.	EXPLOIT INDOOR GROUP CYCLE
WORKING SIZE (LxWxH)	1158x525x1070 (mm) / 45.6x20.7x42.1 (in)
WORKING WEIGHT	52 Kg / 115 Lbs
USER WEIGHT CAPACITY	90 Kg / 200 Lbs
CARTON CUBIC SIZE	1020x250x880 (mm) / 40.2x9.8x34.6 (in)
40' / 40' HC	260 / 310 Sets
FLYWHEEL	20 Kg
TRANSMISSION RATIO	1:3.2
PEDAL ARE OPTIONAL	



EXPLOIT



X1





**AC2970**  
TREADMILL



**AC3170**  
TREADMILL

## TREADMILL FEATURES & SPECS

ITEM NO.	AC2970 COMMERCIAL TREADMILL	AC3170 COMMERCIAL TREADMILL
<b>USER WEIGHT CAPACITY</b>	150Kg / 330Lbs	180Kg / 396Lbs
<b>RUNNING SURFACE</b>	560x1550mm / 22"x61"	520x1550mm / 20.5"x61"
<b>WORKING SIZE / WEIGHT</b>	LxWxH: 2180x900x1410mm / 85.8"x35.4"x55.5" Wt: 175Kg / 386Lbs	LxWxH: 2250x910x1610mm / 98.4"x36"x63.4" Wt: 215Kg / 474Lbs
<b>CARTON CUBIC SIZE</b>	LxWxH: 2215x905x533mm / 87.2"x 35.6"x21" 40' fits 52 Sets, 40' HC fits 64 Sets	LxWxH: 2220x970x780mm / 87.4"x 38.2"x30.7" 20' fits 15 Sets, 40' fits 35 Sets
<b>COLOR</b>	Frame: Platinum. Shroud: Dark Grey and Accents: Black	Frame: Platinum. Shroud: Dark Grey and Accents: Black
<b>STEP-UP HEIGHT</b>	234mm / 9"	250mm / 10"
<b>MOTOR DRIVE</b>	Continuous 3HP AC Motor, Peak HP: 5HP	Continuous 3HP AC Motor, Peak HP: 5HP
<b>ELECTRICAL</b>	110 / 220 volts with a cord of 3Cx2000mm (78.7")x1.5mm <sup>2</sup>	110 / 220 volts with a cord of 3Cx2000mm (78.7")x1.5mm <sup>2</sup>
<b>CERTIFICATION</b>	CE	CE
<b>SUSPENSION</b>	Double cell neoprene rubber system with 1" thick fiberboard	Double cell neoprene rubber system with 1" thick fiberboard
<b>ROLLER</b>	76.2mm (3") sealed bearing	101mm (4") sealed bearing
<b>INCLINE RANGE</b>	0-15% at 1% increment	0-15% at 1% increment
<b>SPEED RANGE</b>	1-20 Km/h (12.5 mph) in 0.1 Km/h (0.06mph) increments	1-25 Km/h (15.6mph) in 0.1 Km/h (0.06mph) increments
<b>HR MONITORING</b>	Contact Heart Rate System and wireless	Contact Heart Rate System and wireless
<b>DISPLAY</b>	6 Windows LED/ Matrix	5 Windows LED / Matrix 16x80
<b>READOUTS</b>	Speed and incline, time elapsed, calories, calories/hour, pace (min/km or mile), distance, course profile, heart rate, heart rate tracking, 1/4 mile or 400 meters motivational track, laps completed, etc.	Speed and incline, time elapsed, calories, calories/hour, pace (min/km or mile), distance, course profile, heart rate, heart rate tracking, 1/4 mile or 400 meters motivational track, laps completed, etc.
<b>PROGRAMES</b>	5 preset, 3 HRC and 2 user programe, Quick start funtion	5 preset, 3 HRC and 4 user programe, Quick start funtion
<b>FEATURES</b>	Safety lockout control, One-touch™ speed & incline, belt logo optional, intergrated surge protector, easy adjust roller, easy disgnostics, easy deck cleaning, easy lube, etc.	Personal cooling fan, safety lockout control, One-touch™ speed & incline, belt logo optional, intergrated surge protector, easy adjust roller, easy disgnostics, easy deck cleaning, easy lube, etc.



IT307 IT307CE

IT307 TREADMILL	
WORKING SIZE (LxWxH)	1900x880x1230 (mm) 74.8x34.6x48.4 (in)
WORKING WEIGHT	102 Kg / 225 Lbs
RUNNING SURFACE	500x1520 (mm) / 19.7x59.8 (in)
MOTOR DRIVE	Peak 3.0 HP(DC) / Con. 1.75 HP(DC)
INCLINE / SPEED	0 ~ 12% / 1 ~ 18 Km/h
DISPLAY	1 Window LCD Blue Back Light
USER WEIGHT CAPACITY	130 Kg / 285 Lbs
CARTON CUBIC SIZE (LxWxH)	1995x915x370 (mm) 78.5x36x14.6 (in)
40' HC	90 Sets



DC1952 TREADMILL	
WORKING SIZE (LxWxH)	1675x770x1250 (mm) 65.9x30.3x49.2 (in)
WORKING WEIGHT	78 Kg / 172 Lbs
RUNNING SURFACE	445x1300 (mm) / 17.5x51.2 (in)
MOTOR DRIVE	Peak 2.0 HP(DC) / Con. 1.25 HP(DC)
INCLINE / SPEED	0 ~ 12% / 1 ~ 16Km/h
DISPLAY	4 Windows + LCD
USER WEIGHT CAPACITY	100 Kg / 220 Lbs
CARTON CUBIC SIZE (LxWxH)	1730x760x290 (mm) 68.1x29.9x11.4 (in)
40'	158 Sets



IT407 IT407CE

IT407 TREADMILL	
WORKING SIZE (LxWxH)	1850x860x1480 (mm) 72.8x33.9x58.3 (in)
WORKING WEIGHT	102 Kg / 225 Lbs
RUNNING SURFACE	500x1435 (mm) / 19.7x56.5 (in)
MOTOR DRIVE	Peak 2.5 HP(DC) / Con. 1.5 HP(DC)
INCLINE / SPEED	0 ~ 12% / 1 ~ 16 Km/h
DISPLAY	4 Windows LED + Dot Matrix
USER WEIGHT CAPACITY	110 Kg / 240 Lbs
CARTON CUBIC SIZE (LxWxH)	2090x860x340 (mm) 82.3x33.9x13.4 (in)
40' HC	91 Sets



RYDER 5 TREADMILL	
WORKING SIZE (LxWxH)	1875x870x1375 (mm) 73.8x34.3x54.1 (in)
WORKING WEIGHT	89 Kg / 196 Lbs
RUNNING SURFACE	500x1440 (mm) / 19.7x56.7 (in)
MOTOR DRIVE	Peak 2.5 HP(DC) / Con. 1.5 HP(DC)
INCLINE / SPEED	0 ~ 10% / 1 ~ 16 Km/h
DISPLAY	1 LCD
USER WEIGHT CAPACITY	110 Kg / 240 Lbs
CARTON CUBIC SIZE (LxWxH)	2185x915x330 (mm) 86x36x13 (in)
40' HC	103 Sets

STRENGTH SERIES



STRENGTH SERIES



## Impulse Strength Training Equipment Limited Warranty

Description	Warranty
Structural Steel Frame	Lifetime
Rotary Bearings, Weight Stacks, Pulleys, Guide Rods, Structural Moving Parts	2 Years
Cable, Linear Bearings, Springs	1 Year
Upholstery, Handgrips, All Other Items Not Listed	6 Months

## Impulse Cardiovascular Equipment Limited Warranty

Description	Warranty
Frame	7 Years
Treadmill AC Motor	3 Years
Treadmill DC Motor, Structural Moving Parts	2 Years
Display PCB, Motor Controller, Generator, EMS, ECB Brake	2 Years
Key Pad, Durable Wear Parts	1 Year

\* Conditions and Restrictions Applied.

