



ANDES 3



ANDES 5

ELLIPTICAL OWNER'S MANUAL



Read the ELLIPTICAL GUIDE before using this OWNER'S MANUAL.

ASSEMBLY



WARNING

There are several areas during the assembly process that special attention must be paid. It is very important to follow the assembly instructions correctly and to make sure all parts are firmly tightened. If the assembly instructions are not followed correctly, the elliptical could have frame parts that are not tightened and will seem loose and may cause irritating noises. To prevent damage to the elliptical, the assembly instructions must be reviewed and corrective actions should be taken.

Before proceeding, find your elliptical's serial number located on the front stabilizer tube and enter it in the space provided below. Also locate the model name which is next to the serial number.

ENTER YOUR SERIAL NUMBER AND MODEL NAME IN THE BOXES BELOW:

SERIAL NUMBER:

--	--	--	--	--	--	--	--	--	--	--	--	--	--	--	--	--	--	--	--

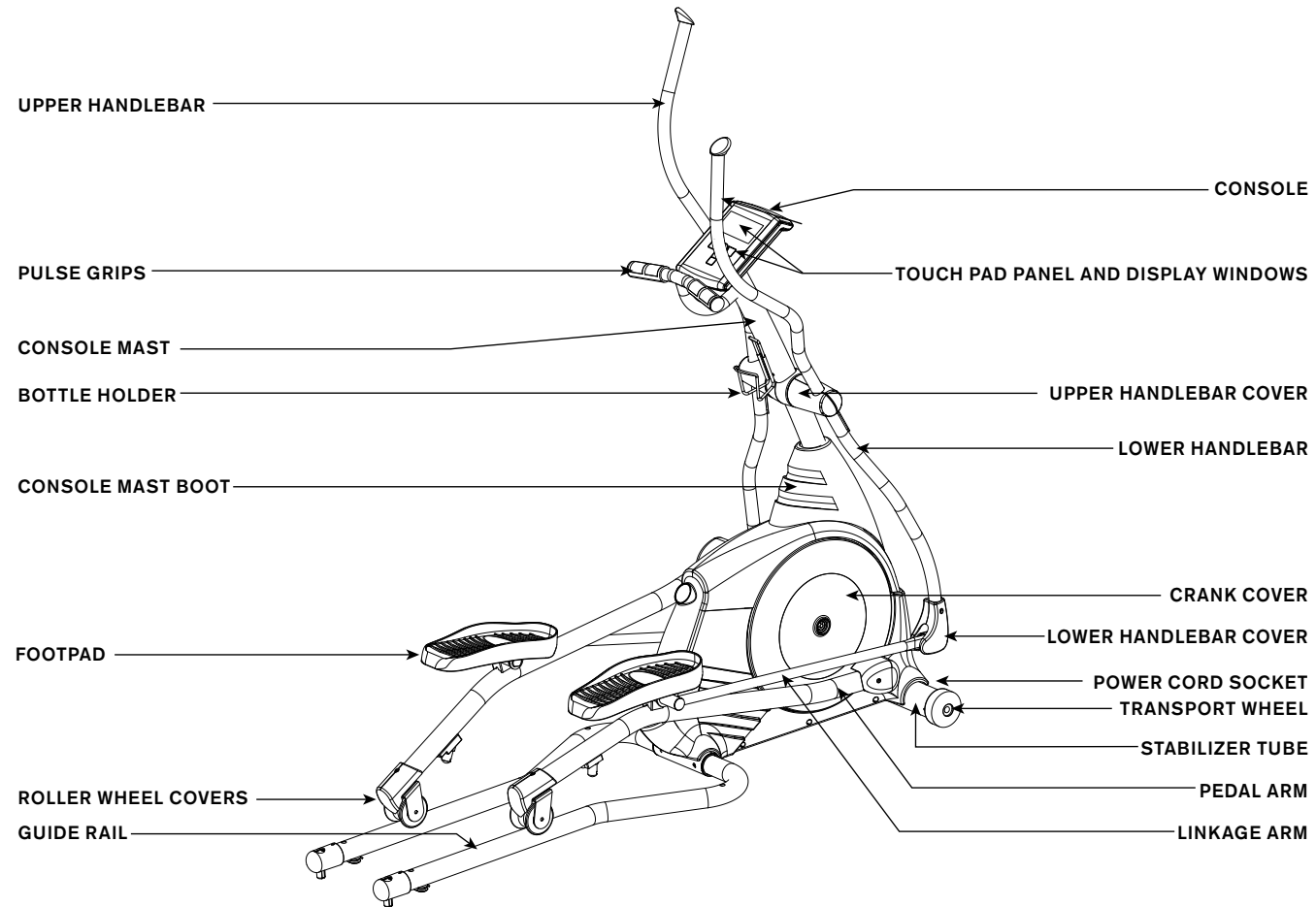
MODEL NAME: **HORIZON**

--	--	--	--	--	--	--	--	--	--	--	--	--	--	--	--	--	--	--	--

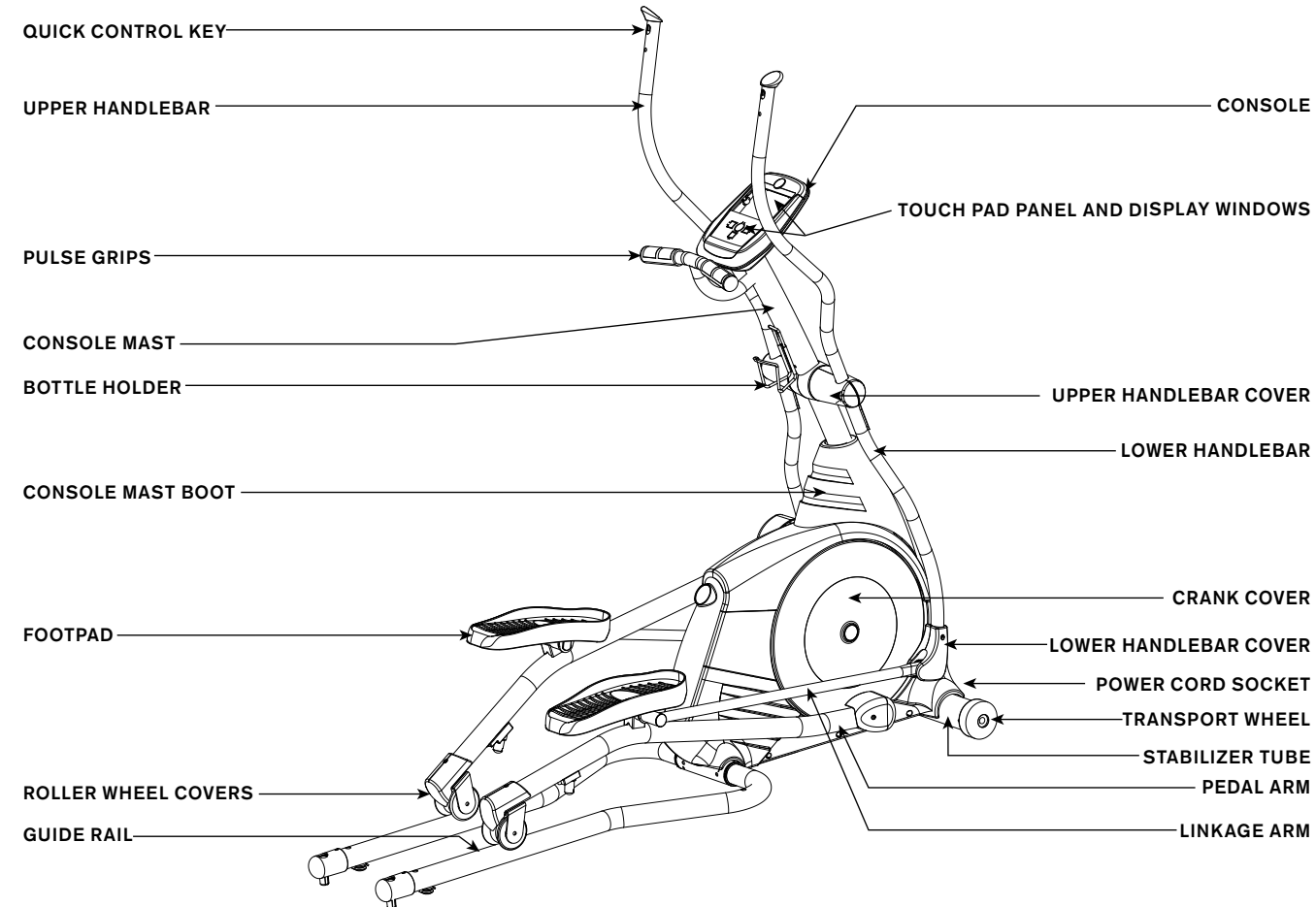
ELLIPTICAL



ANDES 3
ANDES 5



ANDES 3
ANDES 5





ANDES 3
ANDES 5

TOOLS INCLUDED:

- 5 mm Allen Wrench (w/ Screw Driver)
- 4 mm Allen Wrench
- 13/15 mm Flat Wrench
- 17 mm/19 mm Flat Wrench

PARTS BOX INCLUDED:

- 1 Main Frame Set
- 2 Upper Handlerbars
- 2 Lower Handlerbars
- 2 Pedal Arms
- 2 Guide Rails
- 1 Console
- 1 Console Mast
- 1 Console Mast Boot
- 1 Water Bottle Holder
- 1 Power Cord
- 2 Transport Wheels
- 2 Roller Wheel Covers
- 2 Upper Handlebar Covers
- 2 Lower Handlebar Covers
- 1 Hardware Pack

PRE ASSEMBLY

UNPACKING

Unpack the product where you will be using it. Place the elliptical carton on a level flat surface. It is recommended that you place a protective covering on your floor. Never open box when it is on its side.

NOTE: During each assembly step, ensure that ALL nuts and bolts are in place and partially threaded in before completely tightening any ONE bolt.

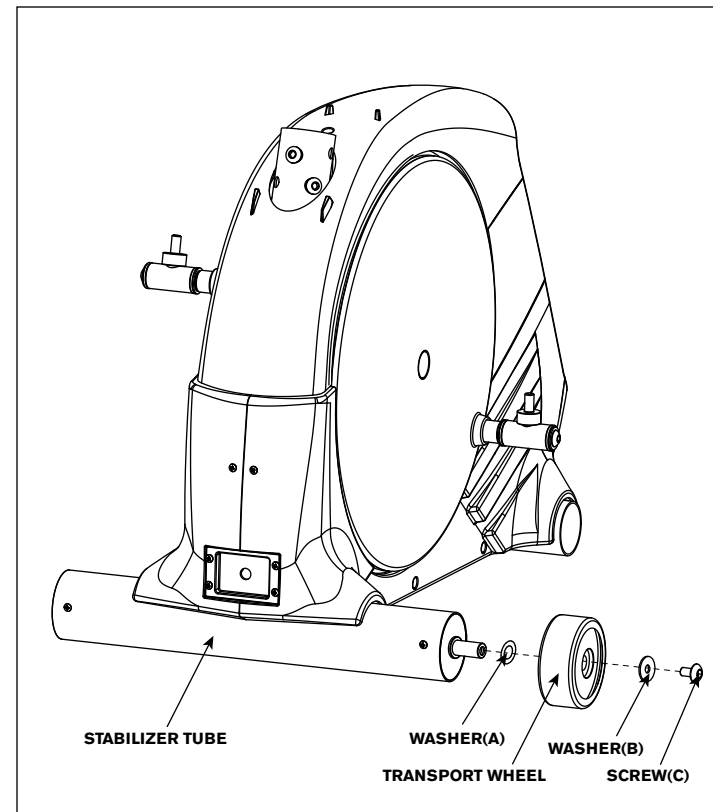
NOTE: A light application of grease may aid in the installation of hardware. Any grease, such as lithium bike grease is recommended.



NEED HELP?

If you have questions or if there are any missing parts, contact Customer Tech Support.

ASSEMBLY STEP 1



HARDWARE PARTS:



WASHER (A)
Φ16XΦ25X1.5T
Qty: 2



WASHER (B)
Φ5/16'XΦ30X1.5T
Qty: 2



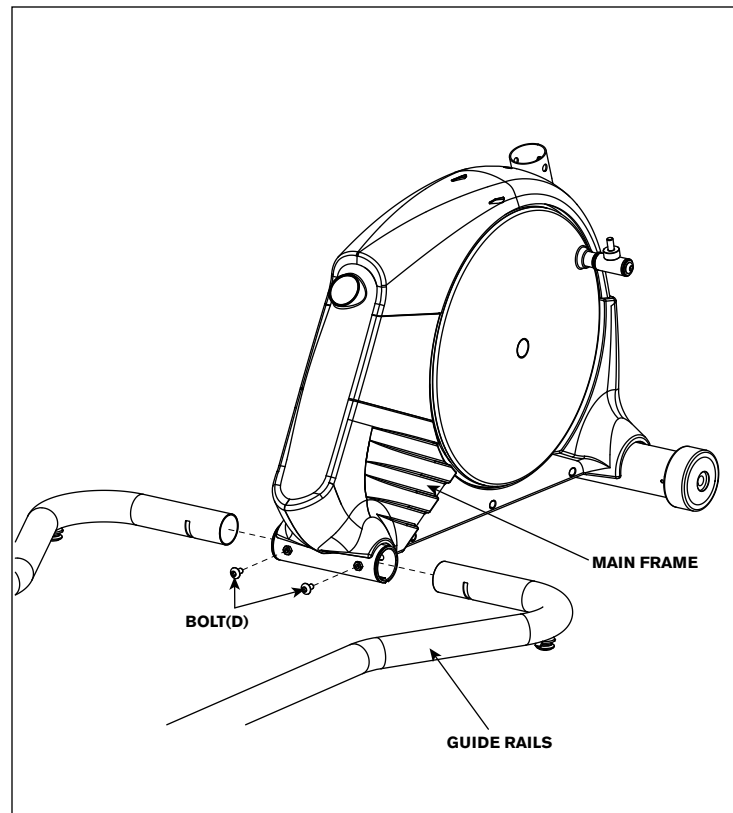
SCREW (C)
M8X1.25PX12L
Qty: 2

- A Open **HARDWARE FOR STEP 1**.
- B Attach the **WASHER (A)** to the tube, and then attach the **TRANSPORT WHEEL** to the **STABILIZER TUBE** using the **WASHER (B)** and **SCREW (C)**.
- C Repeat on the other side.



ANDES 3
ANDES 5

ASSEMBLY STEP 2

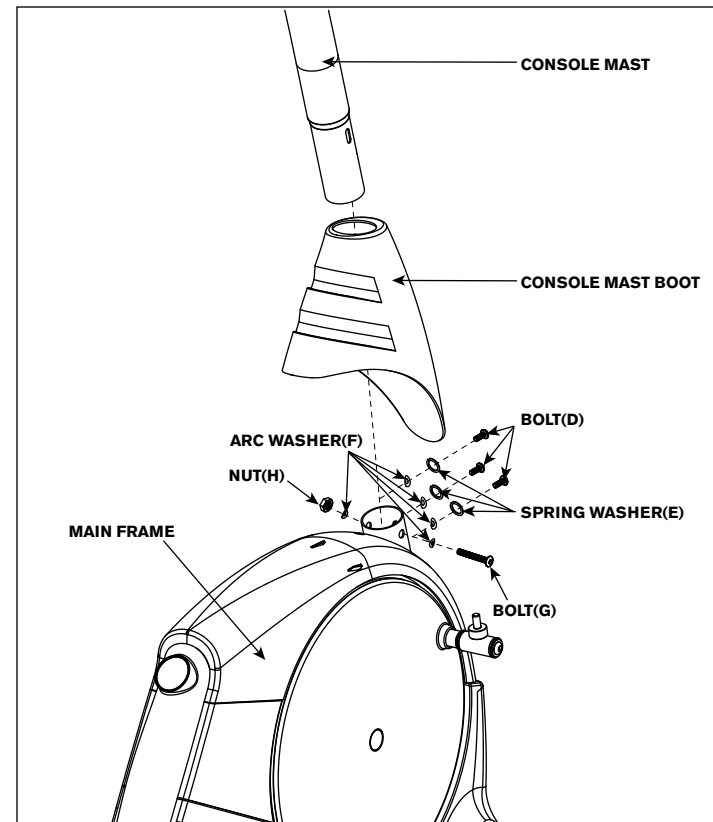


HARDWARE PARTS:

BOLT (D)
M8x1.25Px15L
Qty: 2

- Open **HARDWARE FOR STEP 2**.
- Slide left and right **GUIDE RAILS** into **MAINFRAME**.
- Attach **GUIDE RAILS** using 2 **BOLTS (D)**.

ASSEMBLY STEP 3



HARDWARE PARTS:

BOLT (D)
M8x1.25Px15L
Qty: 3

NYLON NUT (H)
M8x1.25P
Qty: 1

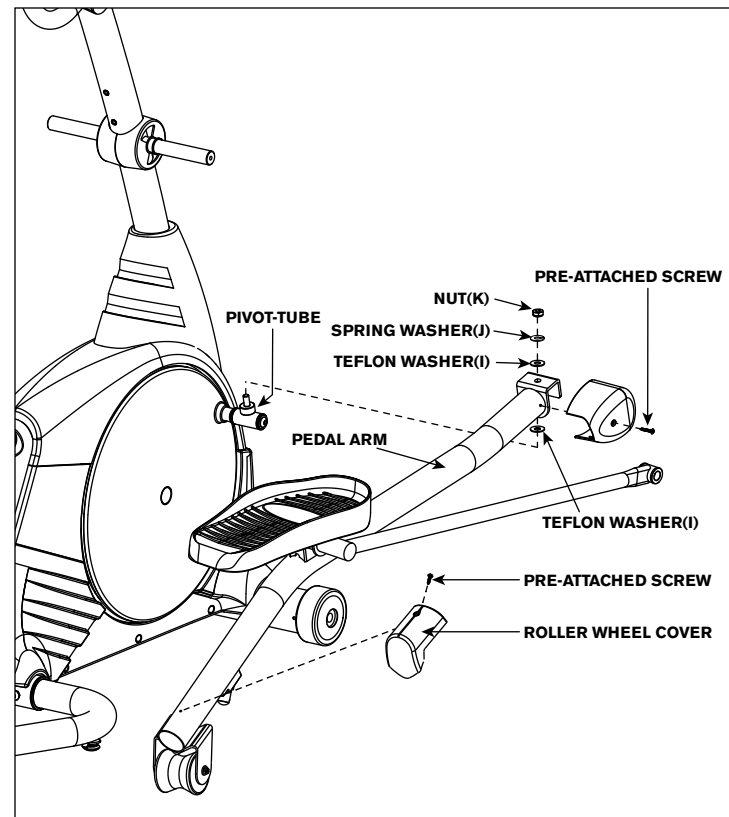
ARC WASHER (F)
Φ8.4xΦ17.0x1.0t
Qty: 5

SPRING WASHER (E)
Φ8.2xΦ13.5x2.0t
Qty: 3

BOLT (G)
M8x1.25Px70L
Qty: 1

- Open **HARDWARE FOR STEP 3**.
- Slide the **CONSOLE MAST BOOT** over the bottom of the **CONSOLE MAST**.
- Carefully pull **CONSOLE CABLES** through the **CONSOLE MAST**. Attach the **CONSOLE CABLES** to the pre-attached routing wire. Discard wire when finished.
- Slide the **CONSOLE MAST** into **MAIN FRAME**.
- Attach **CONSOLE MAST** to **MAIN FRAME** using 3 **BOLTS (D)**, 3 **SPRING WASHERS (E)** and 3 **ARC WASHERS (F)** into front of **CONSOLE MAST**; and using 1 **BOLT (G)**, 2 **ARC WASHERS (F)** and 1 **NUT (H)**.
- Slide the **CONSOLE MAST BOOT** down to cover exposed bolts.

ASSEMBLY STEP 4

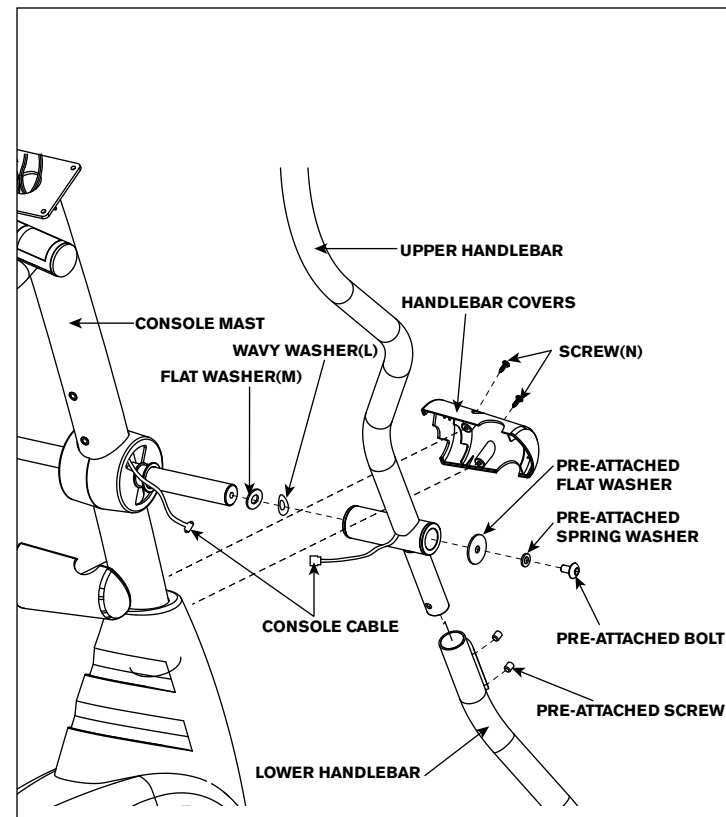


HARDWARE PARTS:

- ① **TEFLON WASHER (I)**
Φ12.2XΦ25X1.5T
Qty: 4
- ② **SPRING WASHER (J)**
Φ12.2XΦ21.5X3.0T
Qty: 2
- ③ **NUT (K)**
M12X1.25PX10
Qty: 2

- A Open **HARDWARE FOR STEP 4**.
- B Remove **PRE-ASSEMBLED SCREWS** from the front end of the **PEDAL ARM**.
- C Place the **PEDAL ARM SET** onto the **PIVOT-TUBE** using 2 **TEFLON WASHERS (I)**, 1 **SPRING WASHER (J)** and 1 **NUT (K)**.
Note: The black surface of teflon washers touch the pedal arm end plate.
- D Attach the **PEDAL ARM COVER** onto the **PEDAL ARM** using 1 **PRE-ASSEMBLED SCREW**.
- E Attach the **ROLLER WHEEL COVER** onto the **PEDAL ARM** using 1 **PRE-ASSEMBLED SCREW**.
- F Repeat B-E steps on the other side.

ASSEMBLY STEP 5

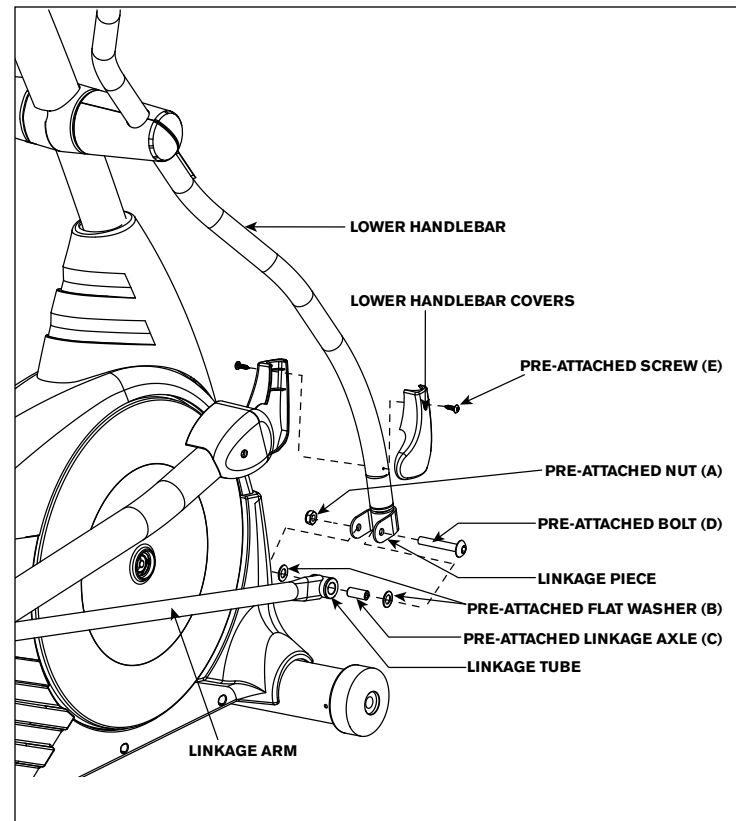


HARDWARE PARTS:

- ① **WAVY WASHER (L)**
Φ26xΦ34x0.3t
Qty: 2
- ② **FLAT WASHER (M)**
Φ25.5xΦ35x1.0t
Qty: 2
- ③ **SCREW (N)**
Φ4x15L
Qty: 4

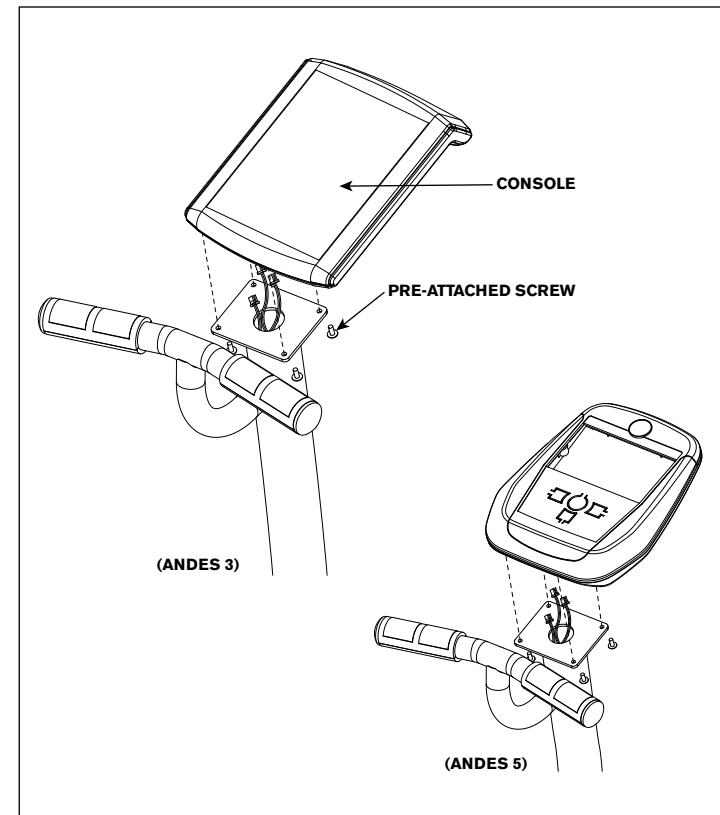
- A Open **HARDWARE FOR STEP 5**.
- B Remove the **PRE-ASSEMBLED BOLT & WASHERS** from **CONSOLE MAST**.
- C Attach **UPPER HANDLEBAR** onto **CONSOLE MAST** using 1 **FLAT WASHER (M)**, 1 **WAVY WASHER (L)**, 1 **PRE-ATTACHED FLAT WASHER**, 1 **PRE-ATTACHED SPRING WASHER** and 1 **PRE-ATTACHED BOLT**.
- D Attach the **CONSOLE CABLE** (Andes 5 only).
- E Remove the **PRE-ASSEMBLED SCREWS** from **HANDLEBARS**.
- F Attach **LOWER HANDLEBARS** to **UPPER HANDLEBARS** using **PRE-ASSEMBLED SCREWS**.
- G Attach **HANDLEBAR COVERS** using 2 **SCREWS (N)**.
- H Repeat step B-G on the other side.

ASSEMBLY STEP 6



- Remove the **PRE-ASSEMBLED SCREWS (E)** from the end of the lower handlebar.
- Remove the **PRE-ASSEMBLED NUT (A)**, **WASHERS (B)**, **LINKAGE AXLE (C)** and **BOLT (D)** from the linkage piece.
- Put the **LINKAGE AXLE (C)** into the linkage tube, and then attach the linkage arm inside the lower handlebar linkage piece using 2 **PRE-ASSEMBLED WASHERS (B)**, 1 **BOLT (D)**, and 1 **NUT (A)**.
- Attach the handlebar covers onto the lower handlebar using **PRE-ASSEMBLED SCREWS (E)**.
- Repeat steps **A-D** on the opposite of the elliptical.

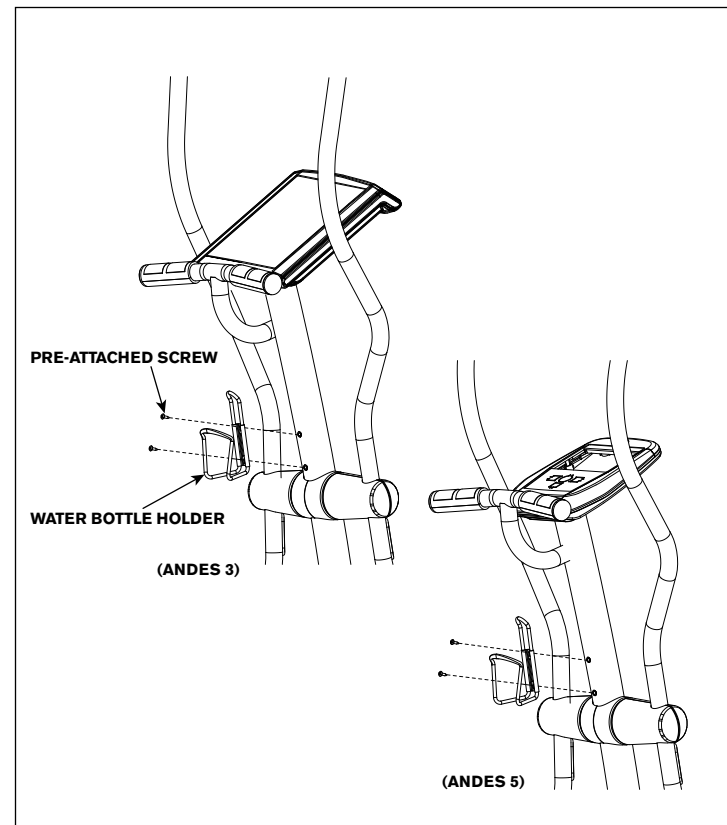
ASSEMBLY STEP 7



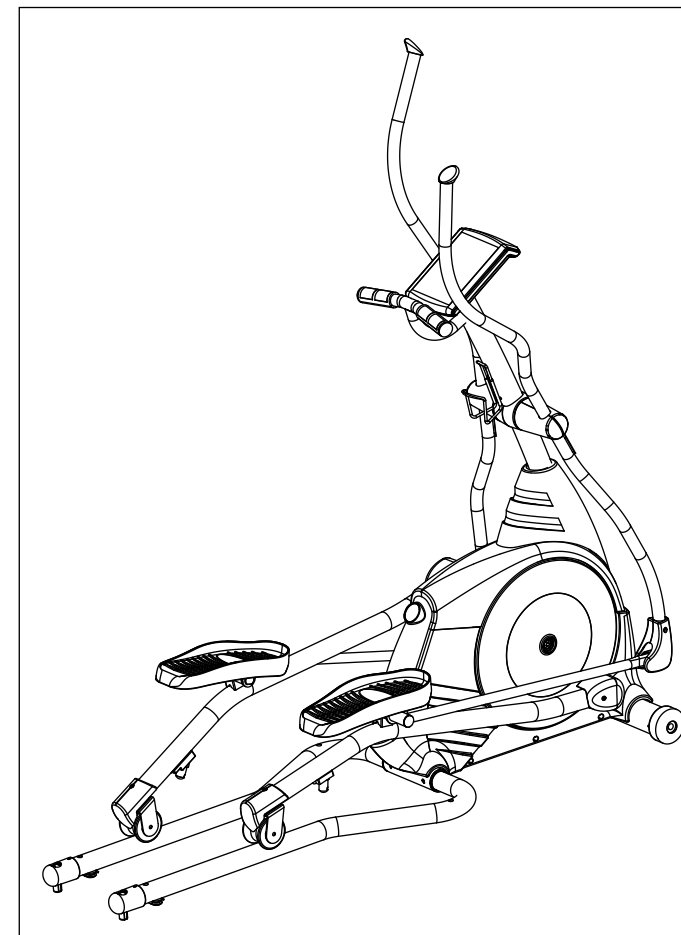
- Remove the 4 **PRE-ASSEMBLED SCREWS**.
- Attach the 3 **CONSOLE CABLES** to the console
- Carefully tuck the **CONSOLE CABLES** into the **CONSOLE MAST** before attaching the **CONSOLE**.
- Attach **CONSOLE** to the **CONSOLE MAST** using the 4 **PRE-ASSEMBLED SCREWS**.

Note : Be careful not to pinch any wires while attaching the console.

ASSEMBLY STEP 8



- A Remove the 2 **PRE-ATTACHED SCREWS** from the console mast.
- B Attach **BOTTLE HOLDER** to the console mast using the 2 **PRE-ASSEMBLED SCREWS**.



ASSEMBLY COMPLETE!

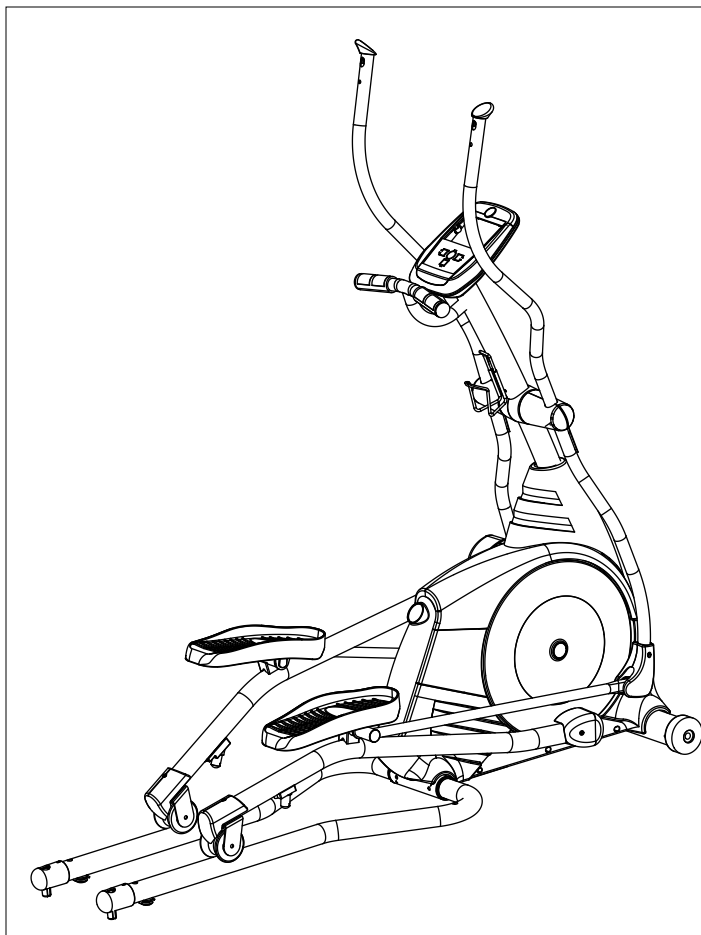
ANDES 3
ECB Magnetic Brake System
Max. User Weight: 136 kg / 300 lbs
Product Weight: 63 kg / 139 lbs
Overall Dimension: 182 x 65 x 189 cm / 72" x 26" x 74"



ANDES 3
ANDES 5



ANDES 3
ANDES 5



ANDES 5
ECB Magnetic Brake System
Max. User Weight: 136 kg / 300 lbs
Product Weight: 67 kg / 148 lbs
Overall Dimension: 182 x 65 x 189 cm / 72" x 26" x 74"

FOLDING INSTRUCTION

FOLDING YOUR ELLIPTICAL TRAINER

NOTE: It is important to always follow the correct order of steps when folding your elliptical trainer.

STEP 1: The first step is to position the elliptical pedal arms in the proper position. The pedal arms can be positioned in two different positions for convenience. The first position is to rotate the left pedal arm so that it is in the backmost position (the left pedal arm wheel should be positioned at the rear of the elliptical trainer). The second position would be to rotate the right pedal arm in the backmost position.

STEP 2: Carefully raise both the pedal arm (in the backmost position) and guide rail simultaneously.

STEP 3: Press and hold the lock latch button located underneath the guide rail end cap. Align the lock latch with the lock latch receiver located underneath the pedal arm. Insert the lock latch receiver into the lock latch. Release the lock latch button once the lock latch is secure.

STEP 4: Repeat process for alternate side.

UNFOLDING YOUR ELLIPTICAL TRAINER

NOTE: It is important to always follow the correct order of steps when unfolding your elliptical trainer.

STEP 1: Firmly grasp both the left pedal arm and guide rail. Press and release the lock latch receiver from the lock latch. Carefully lower the pedal arm and guide rail, standing to the side to avoid any accidental release of the alternate pedal arm and guide rail.

STEP 2: Repeat process for alternate side.

