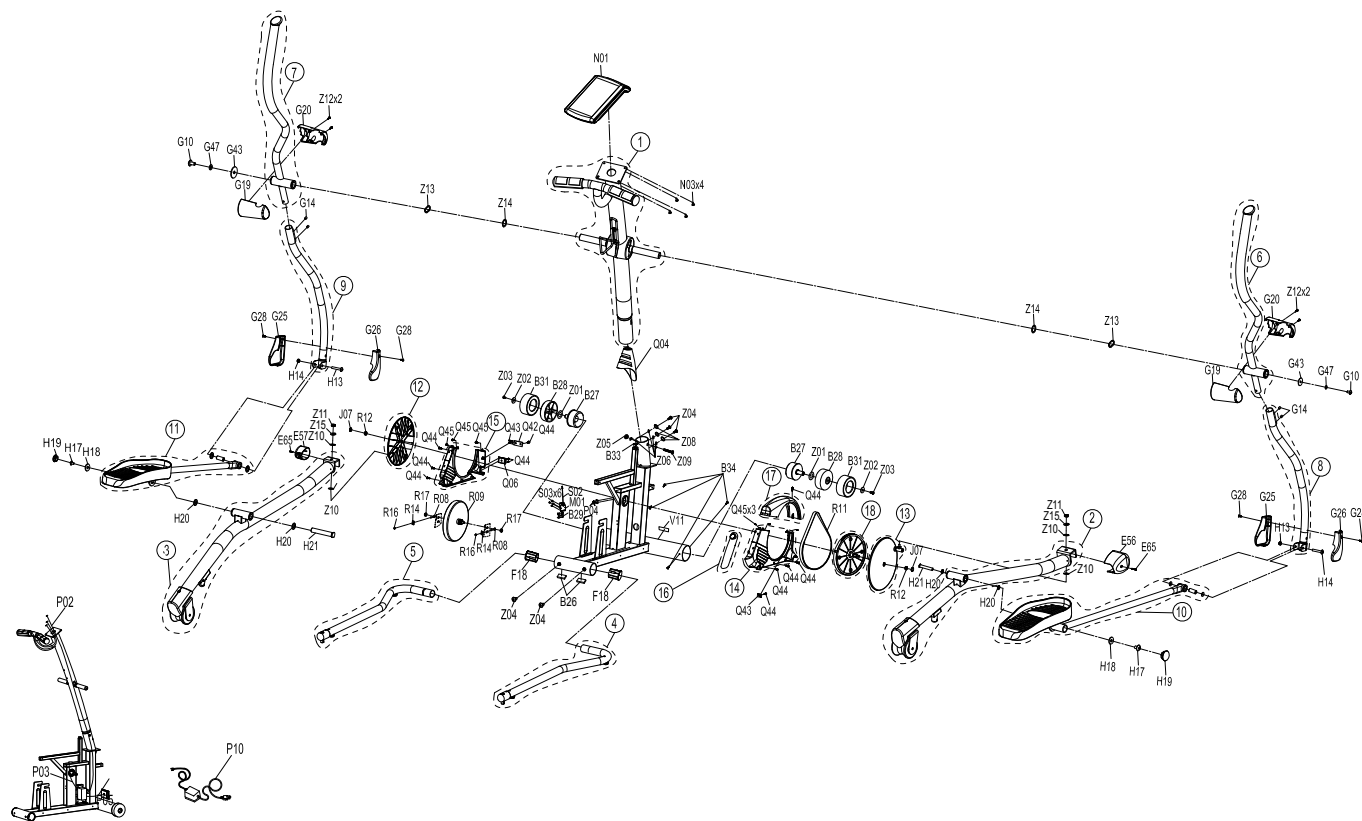


ANDES 3 EXPLODED VIEW



ANDES 3 PARTS LIST

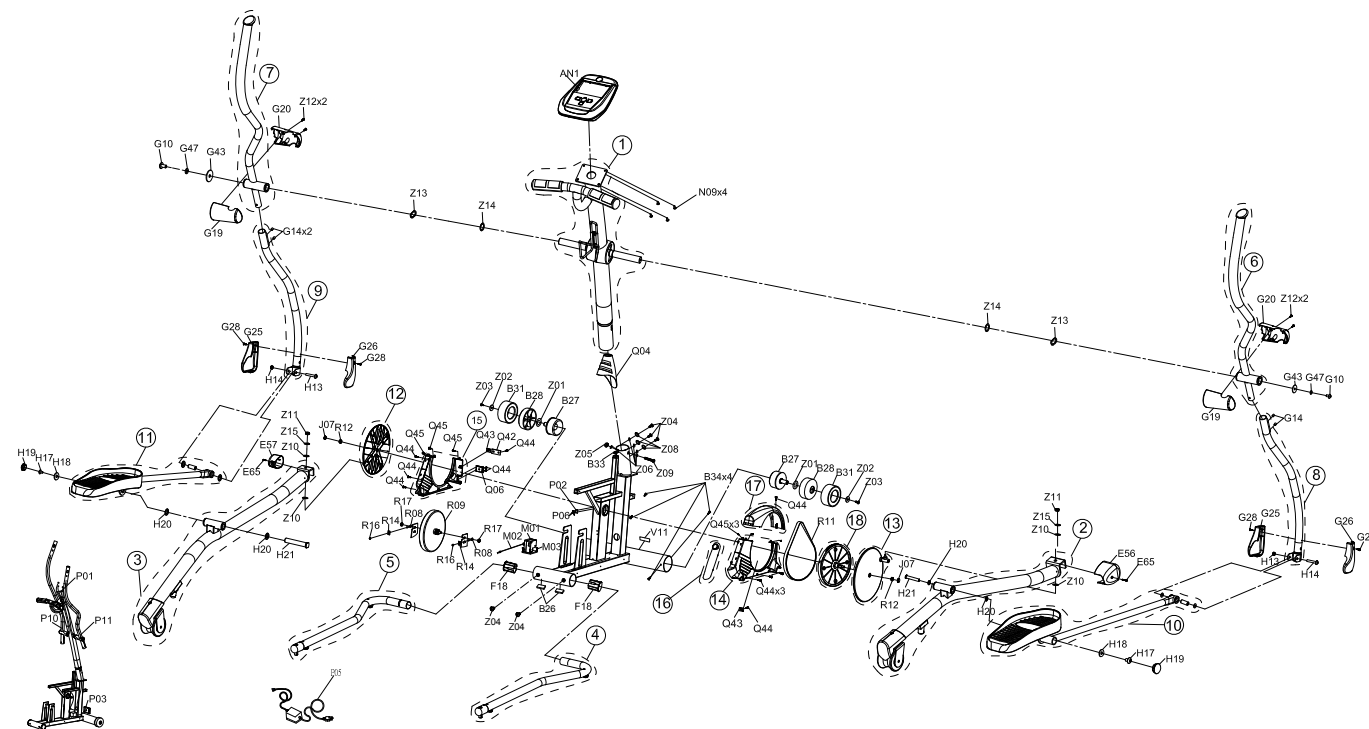
NO.	DESCRIPTION
1	CONSOLE MAST SET;SA;EP264-A12;
2	PEDAL ARM SET;SA;R;EP264-A13;
3	PEDAL ARM SET;SA;L;EP264-A14;
4	GUIDE RAIL SET;SA;R;EP264-A15;
5	GUIDE RAIL SET;SA;L;EP264-A16;
6	ARM REST SET;SA;RU;EP264-A17;
7	ARM REST SET;SA;LU;EP264-A18;
8	ARM REST SET;SA;RD;EP264-A19;
9	ARM REST SET;SA;LD;EP264-A20;
10	LINK ARM SET;SA;R;EP264-A21;
11	LINK ARM SET;SA;L;EP264-A22;
12	CRANK SET;L;SA;EP264-A23;
13	CRANK SET;SA;R;EP264-A23;
14	COVER SET;SA;R;EP264-A24;
15	COVER SET;SA;L;EP264-A25;
16	COVER SET;SA;B;EP264-A26;
17	COVER SET;SA;U;EP264-A27;
18	DRIVE SET;SA;EP264-A28;
B26	REAR STABILIER TUBE RUBBER PAD; BLACK
B27	WHEEL NYLON
B28	WHEEL FRONT RUBBER COVER
B29	FIXING PLATE;MOTOR;T3;SPC;EP264;
B31	SLEEVE WHEEL
B33	CLIP; STANDARD; FE; ZNC
B34	SCREW;BH;Φ4X15L;SM;PH;BZN;POT

NO.	DESCRIPTION
E56	COVER;CRANK;R;ABS;75140;EP29
E57	COVER;CRANK;L;ABS;75140;EP29
E65	SCREW;BH;Φ4X25L;SM;PH;BZN;POT
F18	COVER;GUIDE RAIL;NYLON;EP28
G10	SCREW;BH;M8X1.25PX15L;HS;BP
G14	SCREW;SET;M8X1.25PX10L;BP
G19	COVER;SWIVEL AXLE;F;ABS;75140;EP221
G20	COVER;SWIVEL AXLE;REAR;ABS;75140;EP221
G25	BOOT;ARM REST;UP;L;ABS;75140;EP221
G26	BOOT;ARM REST;UP;R;ABS;75140;EP221
G28	SCREW;BH;Φ4X15L;SM;PH;BZN;POT
G43	WASHER;FLT;Φ8.2XΦ35.0X2.0T;BZN;
G47	WASHER;SPL;Φ8.2XΦ15.4X2.0T;
H13	NUT;NLK;M8X1.25P;BZN;
H14	SCREW;BH;M8X1.25PX50L;HS;BZN;
H17	SCREW;BH;M8X1.25PX13L;HS;BZN;BP
H18	WASHER;FLT;Φ8.2XΦ23.0X2.0T;BZN;
H19	CAP;Φ31.8;BL;EP264-2KM;
H20	WASHER;FLAT;TEFLON;Φ20.2XΦ30.0X2.0T;
H21	SCREW;EP264;
J07	END-CAP;ROUND DISC;ABS;BL;EP28
M01	DC MOTOR;M05J-01;EP264-2KM;
N01	CONSOLE SET;SM2756-67;THE METRIC SYSTEM
N01	CONSOLE SET;U;SM2756-67;..;
N03	SCREW;BH;M5X0.8PX12L;CT;PH;BZN;

NO.	DESCRIPTION
P02	WIRE;CONSOLE;1900L(SM-9Y 2.5-9P);
P03	WIRE;SENSOR;UP;300L(2.5-2P OKI);
P04	SCREW;BH;Φ3X10L;SM;PH;BZN;POT
P05	DC POER;400L(2.5-3P DC;
P10	POWER ADAPTER
Q04	BOOT;CONSOLE MAST;PVC;BLACK;EP221
Q06	PLATE POWER SOCKET
Q42	BRACKET SIDE COVER
Q43	CLIP; STANDARD; FE; ZNC
Q44	SCREW;BH;Φ4X15L;SM;PH;BZN;POT
Q45	SCREW;BH;Φ4X12L;SM;PH;BZN;POT
R08	SCREW;EB;1/4-20UNCX45L(25L)EYEΦ10;ZN-BL
R09	INSIDE ECB CONTROLLER;6.5KG;EP18
R11	BELT;POLY-V;410-J8;GATES
R12	NUT;HXF;M10X1.25P;SS41;BZN;
R14	FIX PLATE;EYE BOLT;SPC;1.3T;AB01
R16	NUT;NLK;1/4'-20UNC;BZN;
R17	NUT;LCK;M12X1.75PX8H;SS41;ZINC;
S02	STEEL ROPE;45L;EP264-2KM;
S03	SCREW;BH;M4X0.7PX10L;CT;PH;BZN;
V11	SPEC LABEL;CE;EP264-2KM;
Z01	WASHER;FLT;Φ16.0XΦ25.0X1.5T;
Z02	WASHER;FLT;Φ5/16'XΦ30.0X1.5T;BAN;
Z03	SCREW;BH;M8X1.25PX12L;HS;BZN;BP
Z04	SCREW;BH;M8X1.25PX15L;HS;BP

NO.	DESCRIPTION
Z05	NUT;NLK;M8X1.25P;BAN;
Z06	WASHER;ARC;Φ8.4XΦ17.0X1.0T;
Z08	WASHER;SPL;Φ8.2XΦ13.5X2.0T;
Z09	SCREW;BH;M8X1.25PX70L-12L;HS;BZN;P-T
Z10	WASHER;FLT;Φ12.2XΦ25X1.5T;TFN;
Z11	NUT;M12X1.25PX10;8G;BAN;
Z12	SCREW;BH;Φ4X15;SM;PH;WZN;POT
Z13	WASHER;WW;Φ26.0XΦ34.0X0.3T;
Z14	FLAT WASHER; Φ25.5XΦ35.0X1.0T
Z15	WASHER;SPL;Φ12.2XΦ21.5X3.0T;WZN;

ANDES 5 EXPLODED VIEW



ANDES 5 PARTS LIST

NO.	DESCRIPTION
1	CONSOLE MAST SET;SA;EP265-A11;
2	PEDAL ARM SET;SA;R;EP264-A13;
3	PEDAL ARM SET;SA;L;EP264-A14;
4	GUIDE RAIL SET;SA;R;EP264-A15;
5	GUIDE RAIL SET;SA;L;EP264-A16;
6	ARM REST SET;SA;RU;EP265-A16;
7	ARM REST SET;SA;LU;EP265-A17;
8	ARM REST SET;SA;RD;EP264-A19;
9	ARM REST SET;SA;LD;EP264-A20;
10	LINK ARM SET;SA;R;EP264-A21;
11	LINK ARM SET;SA;L;EP264-A22;
12	CRANK SET;L;SA;EP264-A23;
13	CRANK SET;SA;R;EP264-A23;
14	COVER SET;SA;R;EP264-A24;
15	COVER SET;SA;L;EP264-A25;
16	COVER SET;SA;B;EP264-A26;
17	COVER SET;SA;U;EP264-A27;
18	DRIVE SET;SA;EP264-A28;
AN1	CONSOLE SET;SA;U;EP265-2KM;
B26	REAR STABILIER TUBE RUBBER PAD; BLACK
B27	WHEEL NYLON
B28	WHEEL FRONT RUBBER COVER
B31	SLEEVE WHEEL
B33	CLIP; STANDARD; FE; ZNC
B34	SCREW;BH;Φ4X15L;SM;PH;BZN;POT
E56	COVER;CRANK;R;ABS;75140;EP29

NO.	DESCRIPTION
E56	COVER;CRANK;R;ABS;75140;EP29
E57	COVER;CRANK;L;ABS;75140;EP29
E65	SCREW;BH;Φ4X25L;SM;PH;BZN;POT
F18	COVER;GUIDE RAIL;NYLON;EP28
G10	SCREW;BH;M8X1.25PX15L;HS;BP
G14	SCREW;SET;M8X1.25PX10L;BP
G19	COVER;SWIVEL AXLE;F;ABS;75140;EP221
G20	COVER;SWIVEL AXLE;REAR;ABS;75140;EP221
G25	BOOT;ARM REST;UP;L;ABS;75140;EP221
G26	BOOT;ARM REST;UP;R;ABS;75140;EP221
G28	SCREW;BH;Φ4X15L;SM;PH;BZN;POT
G43	WASHER;FLT;Φ8.2XΦ35.0X2.0T;BZN;
G47	WASHER;SPL;Φ8.2XΦ15.4X2.0T;
H13	NUT;NLK;M8X1.25P;BZN;
H14	SCREW;BH;M8X1.25PX50L;HS;BZN;
H17	SCREW;BH;M8X1.25PX13L;HS;BZN;BP
H18	WASHER;FLT;Φ8.2XΦ23.0X2.0T;BZN;
H19	CAP;Φ31.8;BL;EP264-2KM;
H20	WASHER;FLAT;TEFLON;Φ20.2XΦ30.0X2.0T;
H21	SCREW;EP264;
J07	END-CAP;ROUND DISC;ABS;BL;EP28
M01	ECB SET;8KG;EUP;
M02	STEEL ROPE;EP221
M03	SCREW;BH;M4X0.7PX10L;CT;PH;BZN;
N09	SCREW;BH;M5X0.8PX12L;CT;PH;BZN;

NO.	DESCRIPTION
P01	CONSOLEWIRE;1400MM;CKM254301-8PX2
P02	WIRE;SENSOR;250M;OKI SENSOR CKM25430
P03	POWER WIRE;DC;600MM(DC+CKM 25430101-2P)
P05	POWER ADAPTOR
P06	SCREW;BH;Φ3X8L;SM;PH;BAN;POT
P10	EXTERNAL WIRE;HAND GRIP;L;SM-3Y+XHS-3Y;6
P11	EXTERNAL WIRE;HAND GRIP;R;SM-3Y+XHS-3Y;6
Q04	BOOT;CONSOLE MAST;PVC;BLACK;EP221
Q06	PLATE POWER SOCKET
Q42	BRACKET SIDE COVER
Q43	CLIP; STANDARD; FE; ZNC
Q44	SCREW;BH;Φ4X15L;SM;PH;BZN;POT
Q45	SCREW;BH;Φ4X12L;SM;PH;BZN;POT
R08	SCREW;EB;1/4-20UNCX45L(25L)EYEΦ10;ZN-BL
R09	INSIDE ECB CONTROLLER;6.5KG;EP18
R11	BELT;POLY-V;410-J8;GATES
R12	NUT;HXF;M10X1.25P;SS41;BZN;
R14	FIX PLATE;EYE BOLT;SPC;1.3T;AB01
R16	NUT;NLK;1/4'-20UNC;BZN;
R17	NUT;LCK;M12X1.75PX8H;SS41;ZINC;
V11	SPEC LABEL;CE;EP264-2KM;
Z01	WASHER;FLT;Φ16.0XΦ25.0X1.5T;
Z02	WASHER;FLT;Φ5/16'XΦ30.0X1.5T;BAN;
Z03	SCREW;BH;M8X1.25PX12L;HS;BZN;BP
Z04	SCREW;BH;M8X1.25PX15L;HS;BP

NO.	DESCRIPTION
Z05	NUT;NLK;M8X1.25P;BAN;
Z06	WASHER;ARC;Φ8.4XΦ17.0X1.0T;
Z08	WASHER;SPL;Φ8.2XΦ13.5X2.0T;
Z09	SCREW;BH;M8X1.25PX70L-12L;HS;BZN;P-T
Z11	NUT;M12X1.25PX10;8G;BAN;
Z12	SCREW;BH;Φ4X15;SM;PH;WZN;POT
Z13	WASHER;WW;Φ26.0XΦ34.0X0.3T;
Z14	FLAT WASHER; Φ25.5XΦ35.0X1.0T
Z15	WASHER;SPL;Φ12.2XΦ21.5X3.0T;WZN;