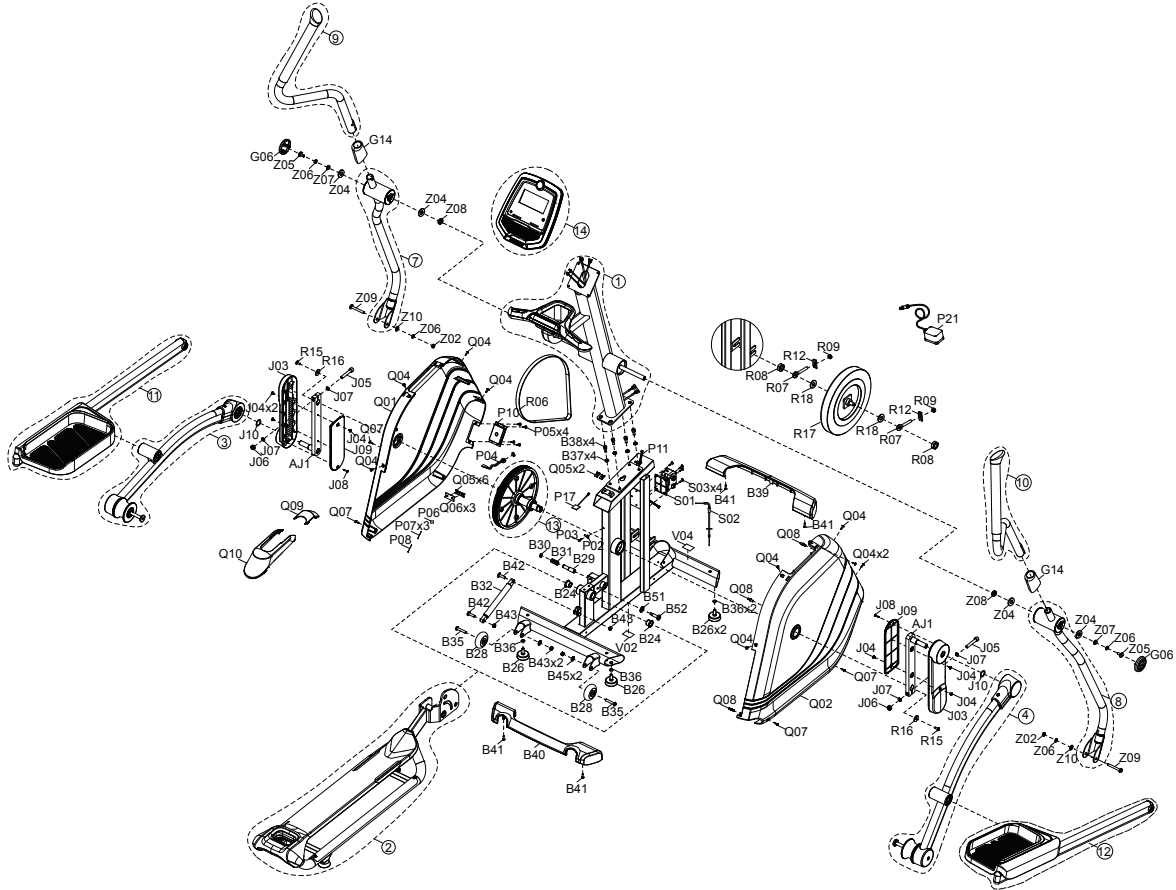


ANDES 5 EXPLODED VIEW



ANDES 5 PARTS LIST

NO.	DESCRIPTION	QTY
B24	BEARING;DRY;PAP 2015;SHUN DE;SHUN DE	2
B26	ADJUSTABLE LEVELER	4
B28	TRANSPORTS WHEEL ;PC;BLACK;FC16;	2
B29	PULL PIN;EP247	1
B30	CLIP CC S-12 EXTERNAL	1
B31	SPRING;CMP;Φ1.2XΦ14.5X17.0LX8.5N;SWP;WZN	1
B32	AIR STICK;SLOW-DROP;75KG;MAX(331)MIN(213	1
B39	COVER;STABILIZER TUBE;FRONT;HIPS,PH-88;	1
B40	COVER;STABILIZER TUBE;MID;HIPS,PH-88;E	1
B41	SCREW;BH;Φ4X15L;SM;PH;BZN;POT	4
B42	SCREW;BH;M8X1.25PX30L;HS;CRMO;	2
B43	NUT;NLK;M8X1.25P;BZN;	4
B52	SCREW;SPECIAL;M8X10L/Φ10X41L;MACHINE THR	1
B51	WASHER;FLT;Φ12.0XΦ25.0X1.5T;TFN;	1
B45	WASHER;FLAT;ΦX8.2XΦX20.0X1.5T;BL ZN;RO	2
B35	SCREW;BH;M8X1.25PX45L;HS;BZN;	2
B36	NUT;HEX;3/8-16UNC-4T;SS41;BLACK ANNODIZE	4
1	CONSOLE MAST SET;SEMI-ASSY;S-EP580;	1
2	FRAME SET;SEMI-ASSY;BACK;S-EP580;	1
3	PEDAL ARM SET;SEMI-ASSY;S-EP580;	1
4	PEDAL ARM SET;RIGHT;S-EP580;	1
7	ARM REST SET;SEMI-ASSY;LEFT DOWN;S-EP580;	1
8	ARM REST SET;SEMI-ASSY;RIGHT DOWN;S-EP580;	1
9	ARM REST SET;SEMI-ASSY;LEFT UP;S-EP580	1
10	ARM REST SET;SEMI-ASSY;RIGHT UP;S-EP580	1

NO.	DESCRIPTION	QTY
11	LINK ARM SET;SEMI-ASSY;LEFT;S-EP580;	1
12	LINK ARM SET;SEMI-ASSY;RIGHT;S-EP580;	1
AJ1	CRANK SET;WELDING;EP543-1US;	2
J03	COVER;CRANK;HIPS;Q520-7-3;EP580-2KM;	2
J05	SCREW;SH;M10X60L-22L;HS;BED;G12.9;	2
J06	NUT;M10X1.5P;G10;BLACK ANNODIZED;	2
J07	WASHER;FLAT;ΦX10.2XΦX15.0X1.5T;BL ZN;R	4
J04	SCREW;BH;M5X0.8PX8L;CT;PH;BZN;	6
J08	SCREW;BH;Φ4X15L;SM;PH;BZN;POT	2
J09	COVER;CRANK;INNER;HIPS;Q520-7-3;EP580-2	2
J10	WASHER;WW;Φ17.2XΦ22.5X0.5T;65MN	2
Q01	SIDE COVER-EXREAWORK;LEFT;SCREEN PRINT;	1
Q02	SIDE COVER-EXREAWORK;RIGHT;SCREEN PRINT	1
Q10	COVER;CONSOEL MAST;BACK;HIPS;Q520-7-3;E	1
Q09	COVER;CONSOEL MAST;FRONT;HIPS;Q520-7-3;	1
Q04	SCREW;BH;Φ4X15L;SM;PH;WZN;POT	9
Q05	CLIP;STANDARD;WUSN-4039;	8
Q06	BRACKET SIDE COVER	3
Q07	SCREW;TRHW;ΦX4X15L;TC;PH;BED;POT;GRE	4
Q08	FIX PILLAR;PP;TM81	2
P02	WIRE;SENSOR;700MM;CYLINDRICAL MAGNETI	1
P11	CONSOLE WIRE;UP1;280MM;CKM254301-8P	1
P03	SCREW;BH;Φ4X10L;TC;PH;BAN;POT	1
P04	POWER WIRE;DC;600MM(DC+CKM 25430101-2P)	1
P06	TIE STRAP ADHESIVE;	1

NO.	DESCRIPTION	QTY
P07	CABLE TIE;NYLON;BLACK;160L	3
P08	CABLE TIE;NYLON;300L;WHITE	1
P10	PLATE POWER SOCKET	1
P05	SCREW;BUTTON HEAD;Φ4X10L;SHEET METAL THR	4
S01	ECB SET;INTERNAL;ERP 0.5W;	1
S02	STEEL ROPE;ECB; 160L;L1+L2=65	1
S03	SCREW;BH;Φ4X12L;TC;PH;BAN;POT	4
13	DRIVE SET;SEMI-ASSY;S-EP580;	1
R06	KEY;ROUND;DUAL-END;6X6X14L;	1
R07	SNAP RING;EXTERNAL;CST;BAN;S-25;	2
R08	FIX PLATE;EYE BOLT;SPC;1.3T;AB01	2
R09	NUT;LCK;AN05 M25X1.5P;SS41;BOX;	2
R12	KEY;ROUND;SIGNAL-END;6X6X20L;	2
R17	FLYWHEEL;8.0KG EP537-1US;	1
R18	WASHER;FLAT;Φ12.5XΦ20.0X2.0T;	2
R15	SCREW;BH;M6X1.0PX15L;MT;HS;G8.8;BAN;BP;	2
R16	WASHER;FLAT;ΦX6.2XΦX30.0X1.5T;BL ZN;RO	2
14	CONSOLE SET;SEMI-ASSY;S-EP580;	1
V02	BAR CODE LABEL;EP580-2KM	1
V04	SAFETY LABEL;CE;EP580-2KM	1
B37	WASHER;FLAT;ΦX12.0XΦX23.0X2.5T;BLACK ZI	4
B38	SCREW;SH;M10X1.5PX20L;HS;BZN;	4
	WRENCH;HEX;L-TYPE;#8MMX147L;	1
Z09	SCREW;BH;M8X70L-12L;HS;G8.8;BZN;BP;	2
Z02	NUT;NLK;M8X1.25P;BZN;	2

NO.	DESCRIPTION	QTY
Z06	WASHER;SPRING LOCK;ΦX8.2XΦX15.4X2.0T;BL	4
Z07	WASHER;FLAT;ΦX8.6XΦX26.0X2.0T;BL ZN;RO	2
Z10	WASHER;FLAT;ΦX8.2XΦX20.0X1.5T;BL ZN;RO	2
Z04	WASHER;FLT;Φ16.0XΦ25.0X1.5T;	4
Z05	SCREW;BH;M8X20L;HS;BZN;BP;G8.8;	2
Z08	RING;RUBBER;Ψ26.2XΨ16.20X11.50	2
	WRENCH;HEX L-TYPE;5MM 52X140L;BLACK OX	1
	WRENCHOPEN-TYPE#13#15**DISC USE 005382-Z	1
P21	ADAPTER;EUROPE;100-240V/50HZ;12V/2A;HOR	1
P21	ADAPTER;HK/KW/GB;100-240V/50HZ;12V/2A;H	1
P21	SWITCH POWER (NZL);100-240V/50HZ 12V/2A	1
P21	ADAPTER;SOUTHAFRICA;100-240V/50HZ;12V/2A	1
P21	ADAPTER;INDIA;100-240V/50HZ;12V/2A;2.0M;	1
P21	ADAPTER;ISREL;100-240V/50HZ;12V/2A;2.0M;	1
P21	ADAPTER;SWITZERLAND;100-240V/50HZ;12V/2A	1
P21	ADAPTER;ARGENTINA;100-240V/50HZ;12V/2A;2	1
P21	ADAPTER;CHINA;100-240V/50HZ;12V/2A;2.0M;	1
P21	ADAPTER;UL;100-240V;12V/2A;2.0M;	1
P21	POWER ADAPTOR;BRAZIL;100-240V/60HZ	1
P21	ADAPTOR SET;CL;IN;100-240V/50-60HZ;12V/2	1
	ADAPTER;HK/KW/GB;100-240V/50HZ;12V/2A;H	1
	MULII_PURPOSE ADAPTER;WA-12A;10-12A;CL	1
P21	ADAPTER;TW/JP;100-240V/50-60HZ;12V/2A;2.	1
P17	WIRELESS RECEIVER SET	1

ANDES 7i PARTS LIST

NO.	DESCRIPTION	QTY
B32	AIR STICK;SLOW-DROP;75KG;MAX(331)MIN(213	1
B41	SCREW;BH;Φ4X15L;SM;PH;BZN;POT	4
B42	SCREW;BH;M8X1.25PX30L;HS;CRMO;	2
B43	NUT;NLK;M8X1.25P;BZN;	4
B45	WASHER;FLAT;ΦX8.2XΦX20.0X1.5T;BL ZN;RO	2
B39	COVER;STABILIZER TUBE;FRONT;HIPS,PH-88;	1
B40	COVER;STABILIZER TUBE;MID;HIPS,PH-88;E	1
B28	TRANSPORTS WHEEL ;PC;BLACK;FC16;	2
B26	ADJUSTABLE LEVELER	4
B24	BEARING;DRY;PAP 2015;SHUN DE;SHUN DE	2
B30	CLIP CC S-12 EXTERNAL	1
B29	PULL PIN;EP247	1
B31	SPRING;CMP;Φ1.2XΦ14.5X17.0LX8.5N;SWP;WZN	1
B35	SCREW;BH;M8X1.25PX45L;HS;BZN;	2
B36	NUT;HEX;3/8-16UNC-4T;SS41;BLACK ANNODIZE	4
B51	WASHER;FLT;Φ12.0XΦ25.0X1.5T;TFN;	1
B52	SCREW;SPECIAL;M8X10L/Φ10X41L;MACHINE THR	1
1	CONSOLE MAST SET;SEMI-ASSY;S-EP581;	1
P01	WIRE;CONSOLE;DOWN1200MM(CKM254301-8P+SM-	1
2	FRAME SET;SEMI-ASSY;BACK;S-EP581;	1
3	PEDAL ARM SET;SEMI-ASSY;LEFT;S-EP581;	
4	PEDAL ARM SET;SEMI-ASSY;RIGHR;S-EP581;	1
7	ARM REST SET;SEMI-ASSY;LEFT DOWN;S-EP581;	1
8	ARM REST SET;SEMI-ASSY;RIGHT DOWN;S-EP581;	1
9	ARM REST SET;SEMI-ASSY;LEFT UP;S-EP581	1

NO.	DESCRIPTION	QTY
10	ARM REST SET;SEMI-ASSY;RIGHT UP;S-EP581	1
G06	COVER;HAND ARM;ABS/PA757K;Q520-7-3;EP580	2
11	LINK ARM SET;SEMI-ASSY;LEFT;S-EP581;	1
12	LINK ARM SET;SEMI-ASSY;RIGHT;S-EP581;	1
AJ1	CRANK SET;WELDING;EP543-1US;	2
J03	COVER;CRANK;HIPS;Q520-7-3;EP580-2KM;	2
J05	SCREW;SH;M10X60L-22L;HS;BED;G12.9;	2
J06	NUT;M10X1.5P;G10;BLACK ANNODIZED;	2
J07	WASHER;FLAT;ΦX10.2XΦX15.0X1.5T;BL ZN;R	4
J04	SCREW;BH;M5X0.8PX8L;CT;PH;BZN;	6
J08	SCREW;BH;Φ4X15L;SM;PH;BZN;POT	2
J09	COVER;CRANK;INNER;HIPS;Q520-7-3;EP580-2	2
J10	WASHER;WW;Φ17.2XΦ22.5X0.5T;65MN	2
Q01	SIDE COVER-EXREAWORK;LEFT;SCREEN PRINT;	1
Q02	SIDE COVER-EXREAWORK;RIGHT;SCREEN PRINT	1
Q05	SCREW;BH;Φ4X15L;TC;PH;BAN;POT	9
Q06	CLIP;STANDARD;WUSN-4039;	8
Q07	BRACKET SIDE COVER	3
Q08	SCREW;TRHW;ΦX4X15L;TC;PH;BED;POT;GRE	4
Q09	FIX PILLAR;PP;TM81	2
Q03	COVER;CONSOEL MAST;BACK;HIPS;Q520-7-3;EP580	1
Q04	COVER;CONSOEL MAST;FRONT;HIPS;Q520-7-3;EP580	1
P10	PLATE POWER SOCKET	1
P06	TIE STRAP ADHESIVE;	1
P07	CABLE TIE;NYLON;BLACK;160L	3

NO.	DESCRIPTION	QTY
P05	SCREW;BUTTON HEAD;Φ4X10L;SHEET METAL THR	4
P03	SCREW;BH;Φ4X10L;TC;PH;BAN;POT	1
P08	CABLE TIE;NYLON;300L;WHITE	1
P15	CONSOLE WIRE;UP1;280MM;CKM254301-8P	1
P02	WIRE;SENSOR;700MM;CYLINDRICAL MAGNETI	1
P04	OVERCURRENT BREAKER;3A;125V/250V;CITY B	1
P11	WIRE;POWER SOCKET SET;150 150 300;250	1
P12	WIRE;ELECTROMAGNET PWR;400MM;EL-2Y VH	1
P13	FILTER;POWER;3A;220V;BF 1106C-3A-02;ERP	1
P18	WIRE;CTRL BOARD PWR;BLACK;250LOCK700L	1
P19	WIRE;CTRL BOARD PWR;WHITE;250LOCK700L	1
P20	CONTROLLER;DIGITAL BRAKING SYSTEM;EXTRA-	1
P09	SCREW;BH;Φ4X15L;TC;PH;BAN;POT	4
P14	SCREW;BH;Φ4X12L;SM;PH;YZN;POT	1
13	DRIVE SET;SEMI-ASSY;S-EP581;	
R06	PULLEY;POLY-V;BOX;NYLON6+30%FIBER;J10ΦX2	1
R07	SCREW;EB;1/4-20UNCX55L;BZN;	2
R09	NUT;NLK;1/4"-20UNC;BZN;	2
R12	FIX PLATE;EYE BOLT;SPC;1.3T;AB01	2
R15	SCREW;BH;M6X1.0PX15L;MT;HS;G8.8;BAN;BP;	2
R16	WASHER;FLAT;ΦX6.2XΦX30.0X1.5T;BL ZN;RO	2
14	FLYWHEEL SET;SA;EP257B;	1
15	CONSOLE SET;SEMI-ASSY;EP581-2KM;	1
V04	SAFETY LABEL;CE;EP581-2KM	1
B37	WASHER;FLAT;ΦX12.0XΦX23.0X2.5T;BLACK ZI	4

NO.	DESCRIPTION	QTY
B38	SCREW;SH;M10X1.5PX20L;HS;BZN;	4
	WRENCH;HEX;L-TYPE;#8MMX147L;	1
Z09	SCREW;BH;M8X70L-12L;HS;G8.8;BZN;BP;	2
Z02	NUT;NLK;M8X1.25P;BZN;	2
Z06	WASHER;SPRING LOCK;ΦX8.2XΦX15.4X2.0T;BL	4
Z07	WASHER;FLAT;ΦX8.6XΦX26.0X2.0T;BL ZN;RO	2
Z10	WASHER;FLAT;ΦX8.2XΦX20.0X1.5T;BL ZN;RO	2
Z04	WASHER;FLT;Φ16.0XΦ25.0X1.5T;	4
Z05	SCREW;BH;M8X20L;HS;BZN;BP;G8.8;	2
Z08	RING;RUBBER;Ψ26.2XΨ16.20X11.50	2
	WRENCH;HEX L-TYPE;5MM 52X140L;BLACK OX	1
	WRENCHOPEN-TYPE#13#15**DISC USE 005382-Z	1
P21	EXTERNAL PWR;IN;1.5MM;2M;	1
P21	EXTERNAL PWR;NEW ZEALAND;1.5MM;2M;	1
P21	EXTERNAL PWR;EUROPE;1.5MM;2M;	1
P21	EXTERNAL PWR;CHINA;1.5MM;2M	1
P21	EXTERNAL PWR;HK/KW/GB;1.5MM;2M;	1
P21	EXTERNAL PWR;US/CA/TH;16AWG;2M	1
P21	EXTERNAL PWR WIRE SET;ISRAEL;1.5MM;2	1
P21	EXTERNAL PWR;ARGENTINA;1.5MM;2M;	1
P21	EXTERNAL PWR;SOUTH AFRICA;1.5MM;	1
P21	EXTERNAL PWR;SWEDEN;2M;1.5MM	1
P21	EXTERNAL PWR;BR;LENGTH:2M;1.5MM2	1
P21	WIRE;EXTERNAL PWR;SET;CHILE USED;JIS2 U	1
P21	EXTERNAL PWR;1.5MM2;2M;THAILAND;	1

NO.	DESCRIPTION	QTY
P17	WIRELESS RECEIVER SET	1

D: Entsorgungshinweis

HORIZON Fitness - Produkte sind recyclebar. Führen Sie das Gerät am Ende der Nutzungsdauer einer sachgerechten Entsorgung zu (örtliche Sammelstelle).

GB: Waste Disposal

HORIZON Fitness products are recyclable. At the end of its useful life please dispose of this article correctly and safely (local refuse sites).

F: Remarque relative à la gestion des déchets

HORIZON Fitness sont recyclables. A la fin sa durée d'utilisation, remettez l'appareil à un centre de gestion de déchets correct (collecte locale).

NL: Verwijderingsaanwijzing

HORIZON Fitness producten zijn recyclebaar. Breng het apparaat aan het einde van de gebruiksduur naar een op recycling gespecialiseerd bedrijf (plaatselijk verzamelpunt).

E: Informaciones para la evacuación

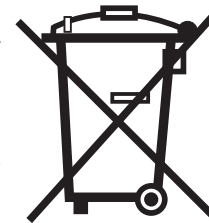
HORIZON Fitness son reciclables. Cuando se termina la vida útil de un aparato o una máquina, entréguelos a una empresa local de eliminación de residuos para su reciclaje.

I: Indicazione sullo smaltimento

HORIZON Fitness sono riciclabili. Quando l'apparecchio non servirà più, portatelo in un apposito punto di raccolta della Vostra città (Punti di raccolta comunali).

PL: Wskazówka dotycząca usuwania odpadów.

Produkty firmy HORIZON Fitness podlegają recyklingowi. Pod koniec okresu użytkowania proszę oddać urządzenie do właściwego punktu usuwania odpadów (lokalny punkt zbiorczy).





HORIZON
FITNESS

ELLIPTICAL OWNER'S MANUAL

Andes 5 & Andes 7i Owner's Manual 073014' Rev. 2.1 © 2014 Horizon Fitness