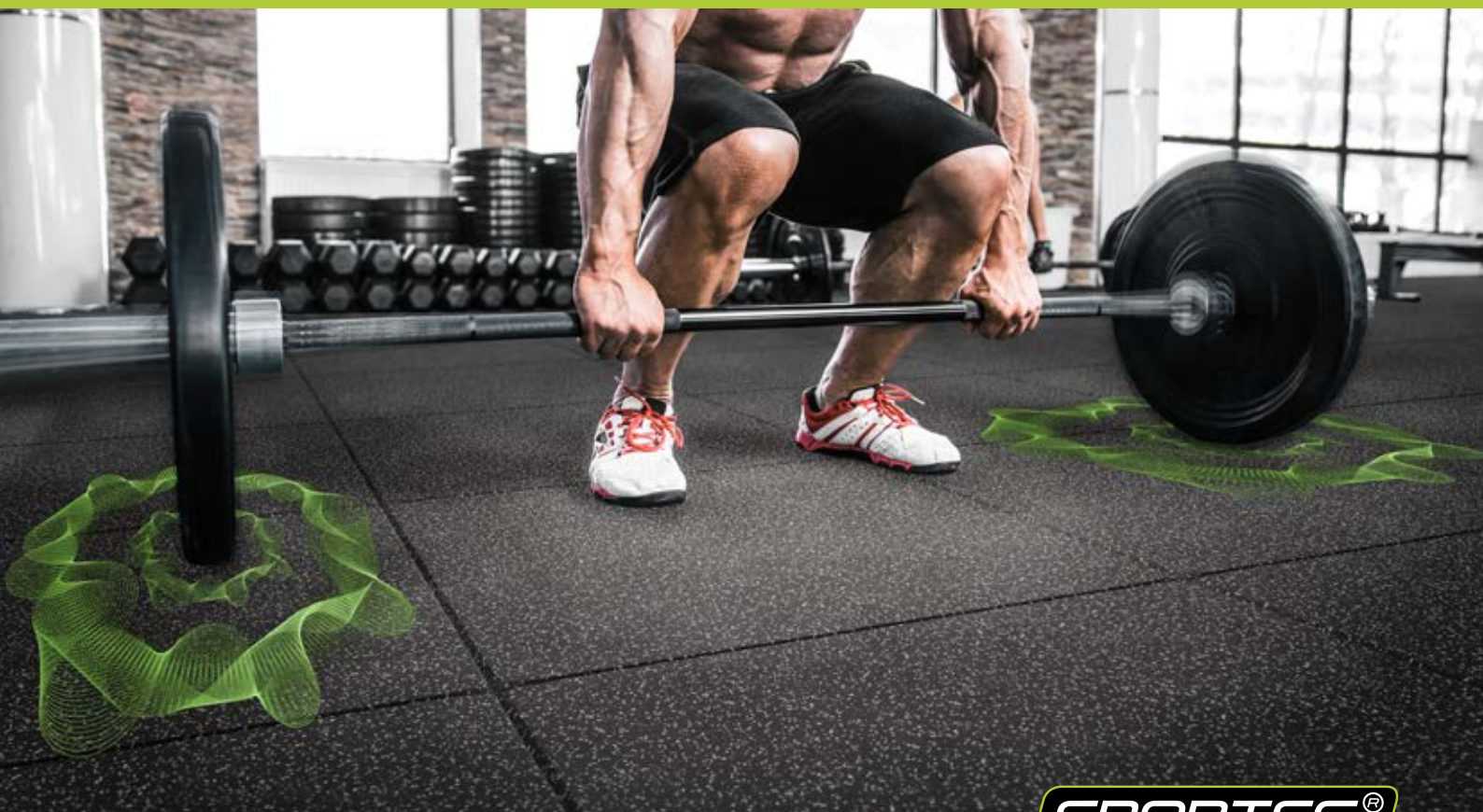


» gymcoustic

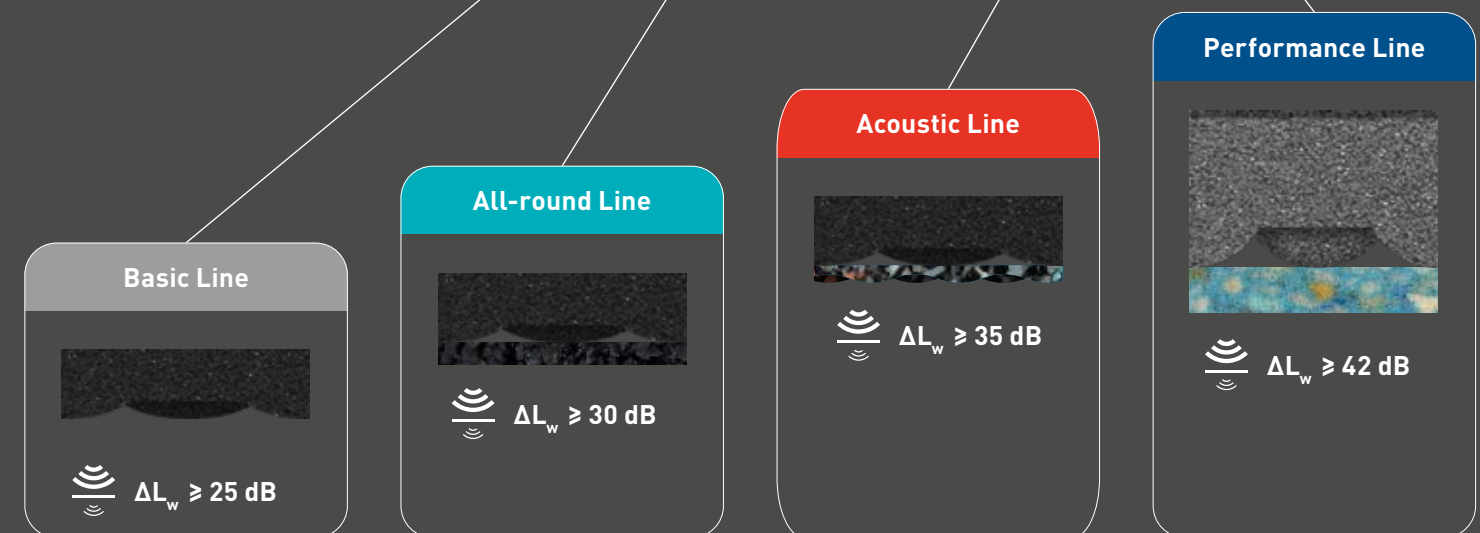
**OUTSTANDING ACOUSTIC INSULATION AND SHOCK ABSORPTION
FOR FITNESS CENTRES AND FREE-WEIGHT AREAS**



SPORTEC®

SOLUTIONS FOR ACOUSTIC INSULATION AND SHOCK ABSORPTION IN FITNESS CENTRES

Acoustic problems in gyms are a big challenge, but avoiding them can be easy. Our Gymcoustic systems are finishing floor solutions offering increasingly high performances and are all applied directly on top of the existing, load-bearing and form-stable subfloors, e.g. concrete, cement bonded screed, meaning they are ideal for renovations and can also be used in new-builds. As well as their technical performance, they respond to the practical challenge of maintaining athletes stability underfoot ensuring that both the gym and its members benefit.



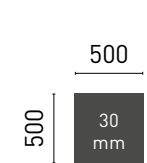
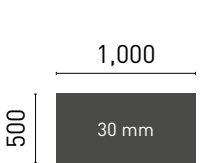
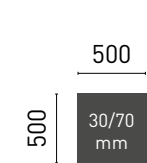
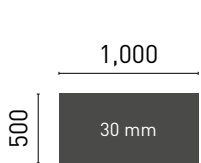
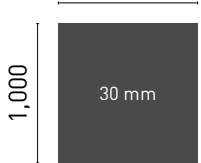
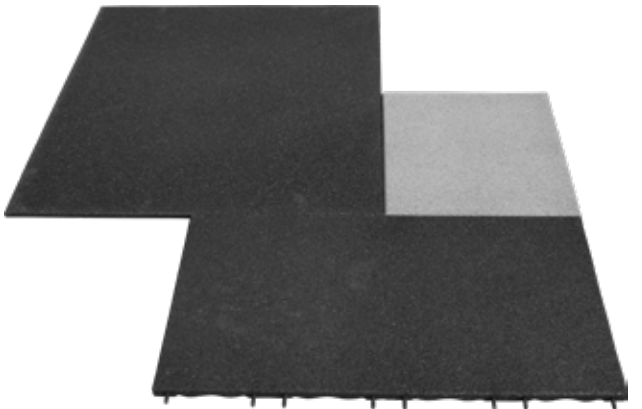
SPORTEC® PRODUCTS IN USE

Surfaces

SPORTEC® style

SPORTEC® base

Whether you prefer a smooth finish or a granular structure to your tiles, both are possible with the SPORTEC® style and SPORTEC® base tiles. Available in 3 dimensions, SPORTEC® style comes with a multitude of colour finish possibilities which include options with a higher fire resistance classification of C_{fl}-s1. SPORTEC® base tiles can also offer a Cfl-s1 option and are available in a black or grey granular finish.



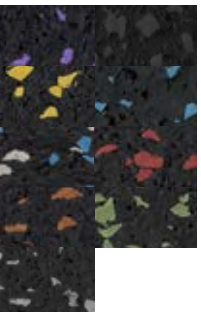
surfaces
SPORTEC® UNI versa



surfaces
SPORTEC® purcolor



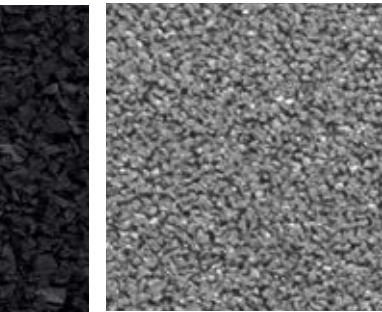
surfaces
SPORTEC® color 15



black



grey



Elastic layers

SPORTEC® team cup X

SPORTEC® shockwave 3D

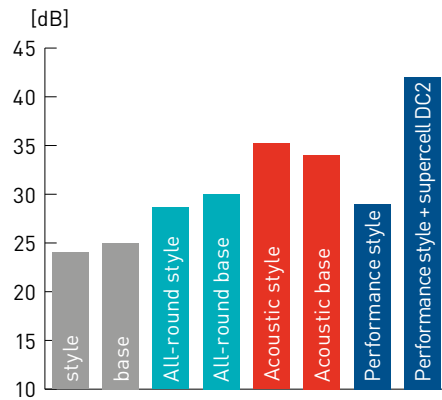
SPORTEC® supercell DC 2

SPORTEC® elastic layers come in various densities thicknesses and compositions – each with its own unique benefits when used as part of the Gymcoustic system.



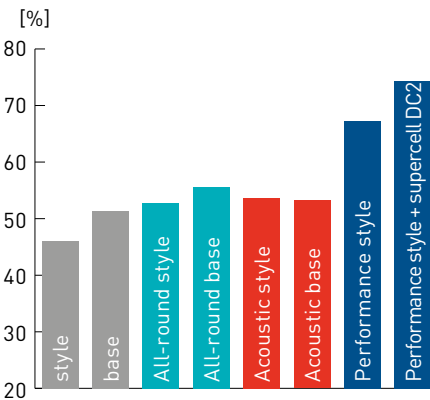
Impact sound improvement ΔL_w
(DIN EN ISO 10140-3)

The impact sound improvement value ΔL_w indicates by how many dB the impact sound insulation is improved by the floor covering compared to the raw ceiling (no floor covering).



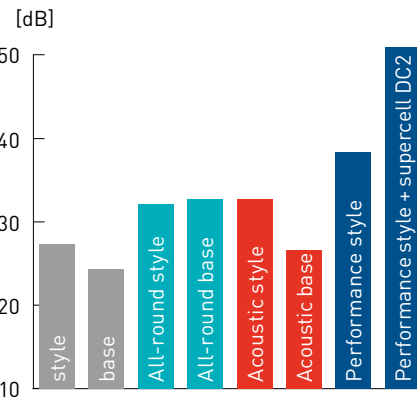
Shock absorption
(DIN EN 14808)

The shock absorption value describes the ability of a floor covering to reduce the force applied by an object when falling. The reference is a rigid floor (concrete floor).



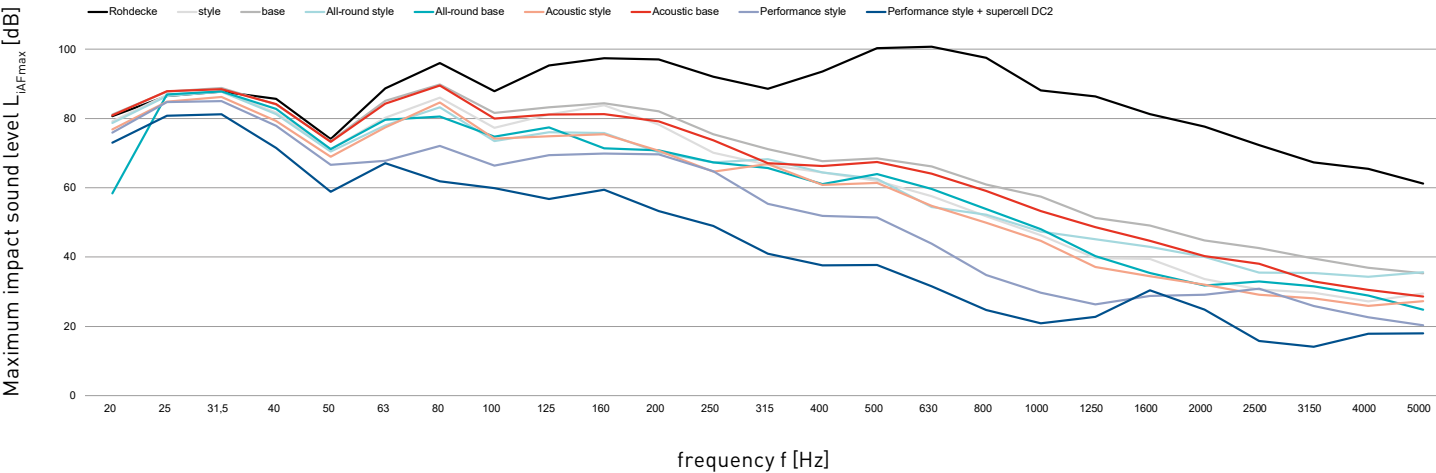
ΔL_{iAFmax} 50 kg, 0.5m
(in acc. with DIN EN ISO 10140-3)

The ΔL_{iAFmax} value indicates the improvement of the highest level of the impact vibration compared to the raw ceiling (no floor covering).



Acoustic performance of the individual systems

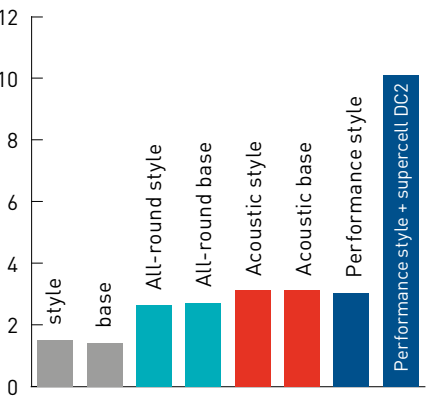
Dropping a 50 kg dumbbell from a height of 0.50 m



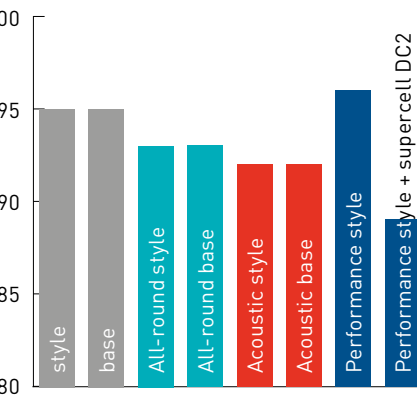
Stability Rating

In weightlifting, high loads act on the floor surface via the athlete's feet. If the floor covering is too soft and the weights are very high, the athlete can sink in and lose stability (risk of injury). The stability of our floor coverings is shown by the test in accordance with DIN EN 826, in which we proved that even weights of up to 300kg (athlete + dumbbell) have no negative effect on the safe standing of the athlete.

Deflection [mm]



Rating [%]



Gymcoustic Basic Line **95%**
Stability rating

SPORTEC® style 30 mm
SPORTEC® base 30 mm

Impact sound improvement 24 dB	Shock absorption 46.0 %	ΔL_{iAFmax} 50 kg 27.2
--	-----------------------------------	--

Gymcoustic All-round Line **93%**
Stability rating

SPORTEC® style 30 mm
SPORTEC® team cup X 10 mm

Impact sound improvement 28 dB	Shock absorption 52.7 %	ΔL_{iAFmax} 50 kg 31.9
--	-----------------------------------	--

Gymcoustic Acoustic Line **92%**
Stability rating

SPORTEC® style 30 mm
SPORTEC® shockwave 3D

Impact sound improvement 35 dB	Shock absorption 53.6 %	ΔL_{iAFmax} 50 kg 32.5
--	-----------------------------------	--

Performance Line **96%**
Stability rating

SPORTEC® style 70 mm

Impact sound improvement 29 dB	Shock absorption 67.3 %	ΔL_{iAFmax} 50 kg 38.2
--	-----------------------------------	--

Performance Line **89%**
Stability rating

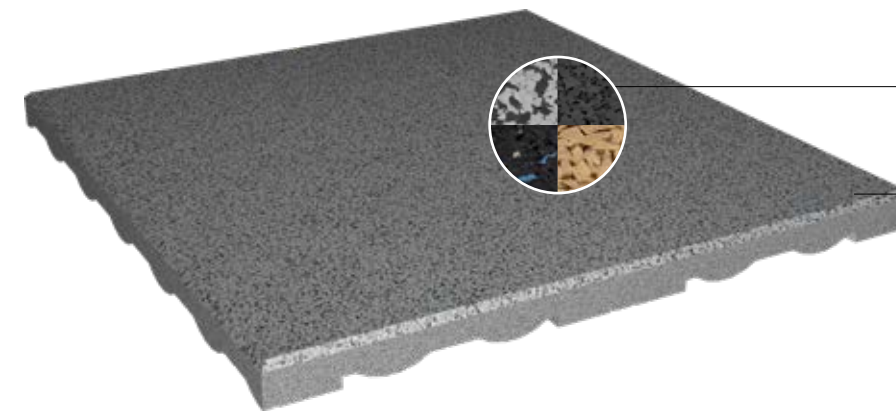
SPORTEC® style 70 mm
SPORTEC® supercell DC2 20 mm

Impact sound improvement 42 dB	Shock absorption 74.3 %	ΔL_{iAFmax} 50 kg 50.7
--	-----------------------------------	--



BASIC LINE STAND-ALONE TILES WITH DIFFERENT DESIGN POSSIBILITIES

Gymcoustic Basic Line



Different design finishes

SPORTEC® style 30 mm



Impact sound
improvement
24 dB



Shock
absorption
46.0 %



ΔL_{IAFmax} 50 kg
27.2



Stability
rating
95 %

Gymcoustic Basic Line



SPORTEC® base 30 mm



Impact sound
improvement
25 dB



Shock
absorption
51,4 %



ΔL_{IAFmax} 50 kg
24,3



Stability
rating
95 %

All of our Gymcoustic systems use either our SPORTEC® style or SPORTEC® base tile as the finish layer and the **Basic Line** offers each of these as a stand-alone solution. Quick and easy to install for all areas of the gym where weights are used and available in various colour finishes, these tiles on their own offer acoustic properties of up to 25dB sound reduction.

We will be happy to advise you! Find your contact person on
www.kraiburg-relastec.com/sportec/en/contact-persons

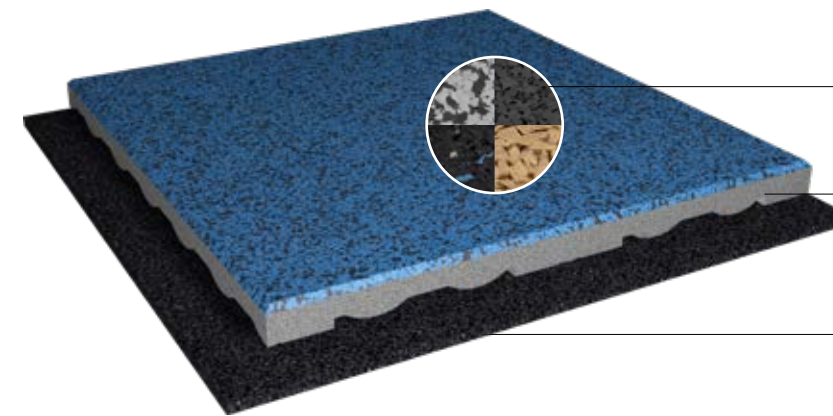
ALL-ROUND LINE

ACOUSTIC INSULATION

AND SHOCK

ABSORPTION

Gymcoustic All-round Line



Different design finishes

SPORTEC® style 30 mm

SPORTEC® team cup X 10 mm



Impact sound
improvement
28 dB



Shock
absorption
52,7 %



ΔL_{iAFmax} 50 kg
31,9



Stability
rating
93 %

Gymcoustic All-round Line



SPORTEC® base 30 mm

SPORTEC® team cup X 10 mm



Impact sound
improvement
30 dB



Shock
absorption
55,6 %



ΔL_{iAFmax} 50 kg
32,6



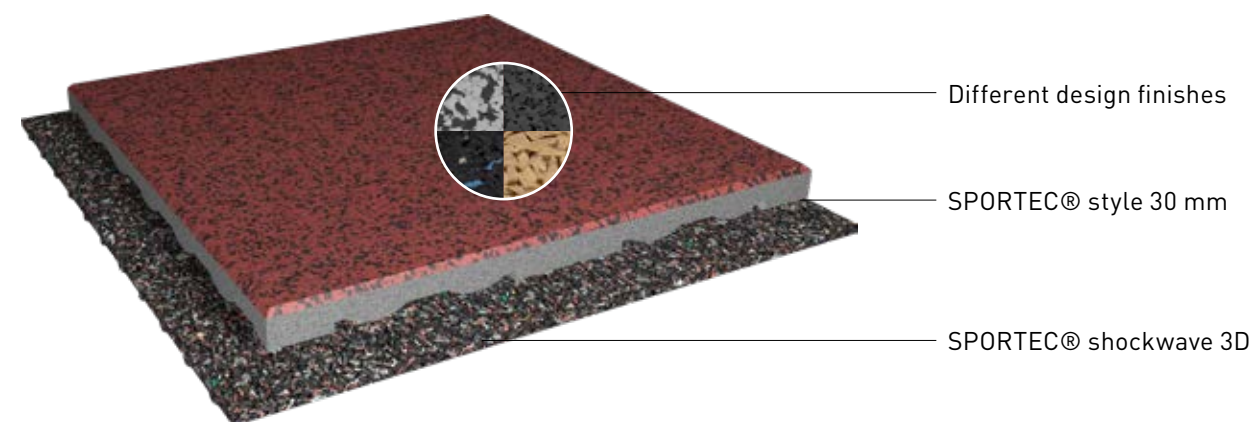
Stability
rating
93 %

In free-weight and strength areas, extra shock and sound absorption is required, the **All-round Line** includes our SPORTEC® team cup X as an additional shock absorbing base layer. Economical and effective, the combination of different product densities improves acoustic and vibration reduction performance and provides additional protection for the sub-base.

We will be happy to advise you! Find your contact person on
www.kraiburg-relastec.com/sportec/en/contact-persons

ACOUSTIC LINE OUTSTANDING ACOUSTIC INSULATION

Gymcoustic Acoustic Line



Impact sound
improvement
35 dB



Shock
absorption
53,6 %

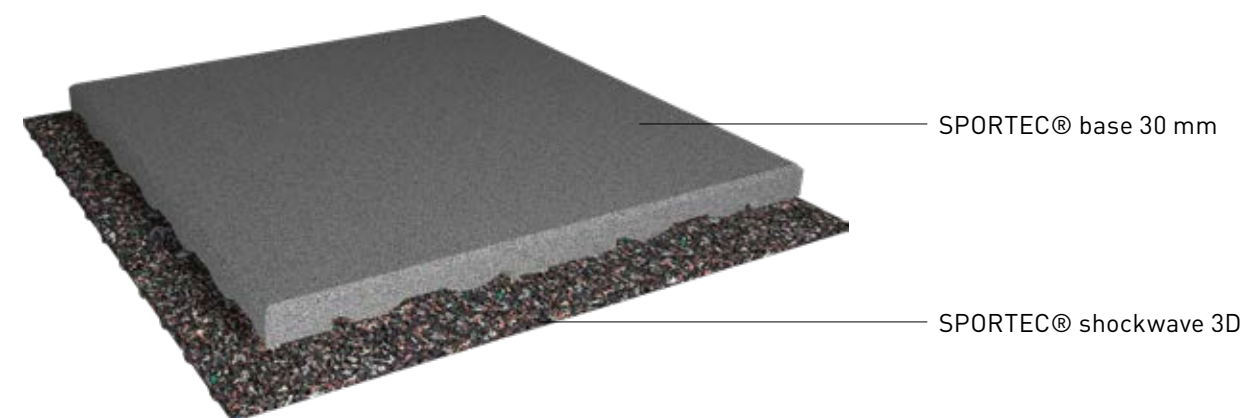


ΔL_{iAFmax} 50 kg
32,5



Stability
rating
92 %

Gymcoustic Acoustic Line



Impact sound
improvement
34 dB



Shock
absorption
53,2 %



ΔL_{iAFmax} 50 kg
26,4



Stability
rating
92 %

Especially designed for gyms that need to solve acoustic problems and avoid problems with their neighbours, the **Acoustic Line** includes our especially developed SPORTEC® shockwave 3D acoustic underlay. As well as reducing noise, these steady and supportive flooring systems enable members to push the limits of their heavy-weight workout in the knowledge that they are not wasting energy or risking safety.

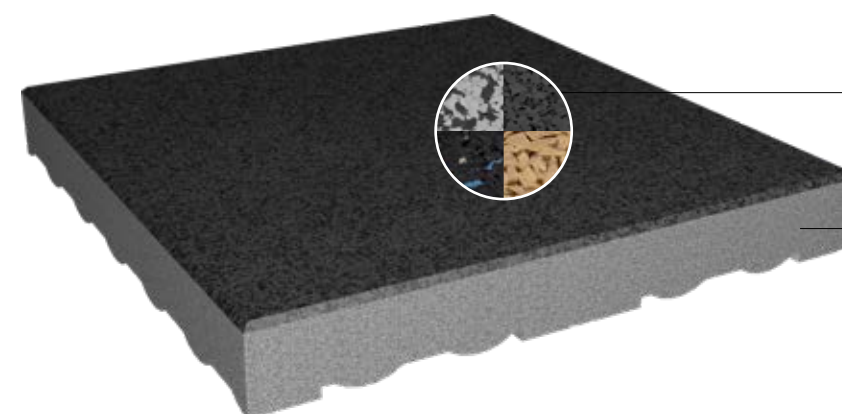
We will be happy to advise you! Find your contact person on
www.kraiburg-relastec.com/sportec/en/contact-persons



PERFORMANCE LINE

EXCEPTIONAL SHOCK ABSORPTION

Gymcoustic Performance Line



Different design finishes

SPORTEC® style 70 mm



Impact sound improvement
29 dB



Shock absorption
67,3 %

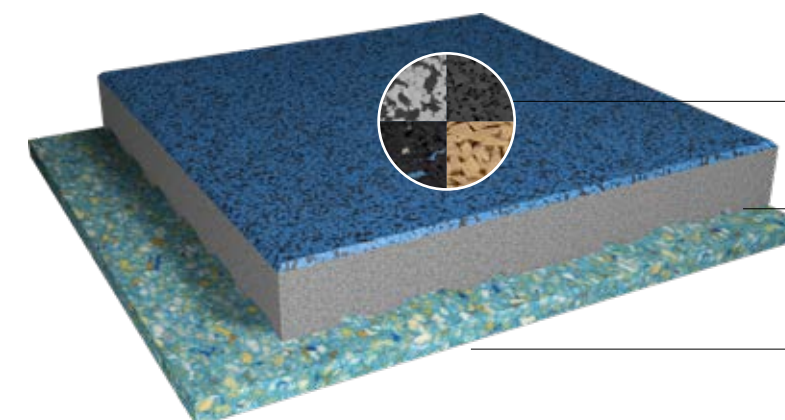


ΔL_{iAFmax} 50 kg
38,2



Stability rating
96 %

Gymcoustic Performance Line



Different design finishes

SPORTEC® style 70 mm

SPORTEC® supercell
DC 2 20 mm



Impact sound improvement
42 dB



Shock absorption
74,3 %



ΔL_{iAFmax} 50 kg
50,7

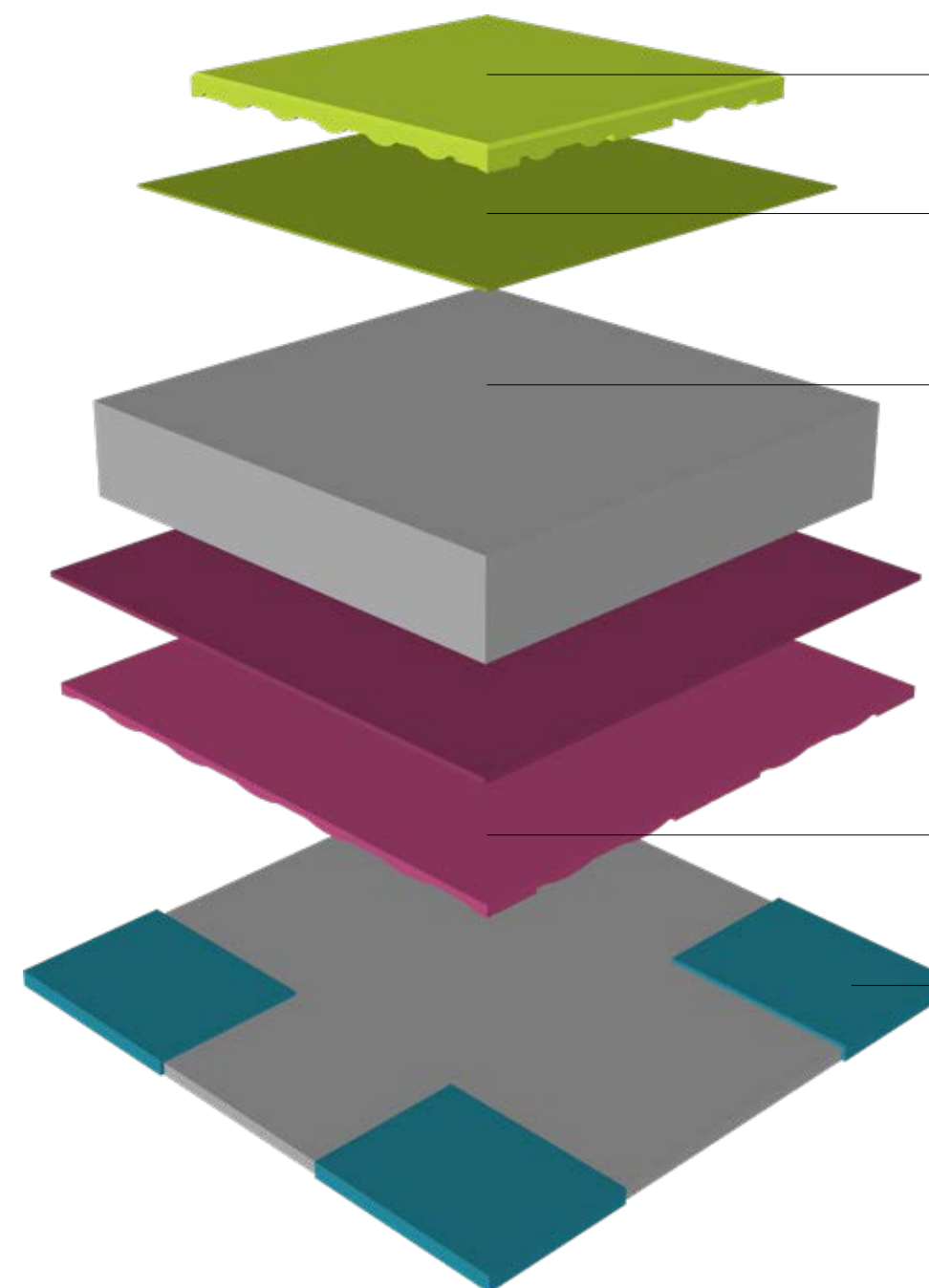


Stability rating
89 %

If you want the ultimate high-performance finishing floor system for your gym, the **Performance Line** is what you need. Extremely good acoustic reduction, unbeatable shock absorption values, additional vibration damping and reassuring finishing floor stability are all combined in these solutions.

We will be happy to advise you! Find your contact person on
www.kraiburg-relastec.com/sportec/en/contact-persons

CUSTOM LINE CUSTOMISED SOLUTIONS FOR SUPERIOR SOUND AND VIBRATION REDUCTION



SPORTEC® Level 1

Different design finishes possible

SPORTEC® Level 2

Different elastic layers, can also be combined depending on requirements

DAMTEC®

For extreme impact sound improvement values, DAMTEC® insulation mats, which are made of high-quality recycled or foam granulates, are laid directly under screed. Depending on the requirements, flat mats or mats with a wave-cut profile are used, if necessary several on top of each other.

KRAIBURG PURASYS

PuraSys vibration pads, in combination with intermediate insulation materials, provide an additional level of sound insulation and effectively reduce vibrations and muffled noises on floors below.

For gyms with extremely challenging acoustic and vibration problems, work under screed may be required. The Gymcoustic **Custom Line** brings together a synergy of three brands from the KRAIBURG Group (SPORTEC® fitness flooring, DAMTEC® acoustic underlays and PuraSys vibration pads) and various combinations of these product ranges can help to resolve the most problematic project issues. Depending on the requirements, we can put in touch with responsible team so that they can develop solutions and discuss the various options with you and your acoustical consultant.

We will be happy to advise you! Find your contact person on
www.kraiburg-relastec.com/sportec/en/contact-persons

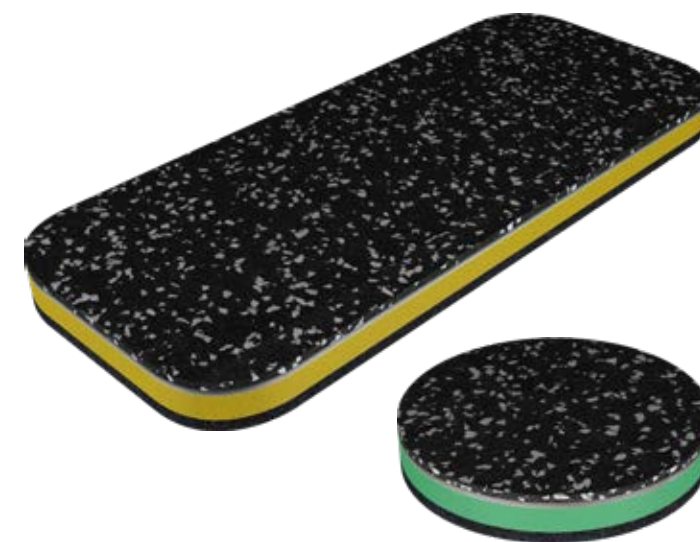


QUICK & EASY SOUND IMPROVING PADS FOR INSTANT USE



SPORTEC® Absorber Pads

OUTSTANDING ACOUSTIC AND VIBRATION ISOLATION FOR CARDIO MACHINES



structure



For gyms where a quick solution is required, our SPORTEC® Absorber Pads offer a direct solution to the problem. Simply place them under the machine that is causing the problems (Treadmills, Cardio machines, Powerplates, Strength stations) and eliminate acoustics and vibration problems at their source.

Applications



»MORE FROM YOUR FLOOR



One set consists of these 4 pads:



Material	see structure
Colours	surface: SPORTEC® color 15 grey
Dimensions	Front Pads: 380 x 160 x 25.5 mm Back Pads: Ø 150 mm x 25.5 mm (± 1.5 %)
Weight	Front Pads: ca. 2.05 kg/pcs. Back Pads: ca. 0.64 kg/pcs.
Coefficient of friction	> 0.30 µ (DS) (EN 13893)







General installation instructions

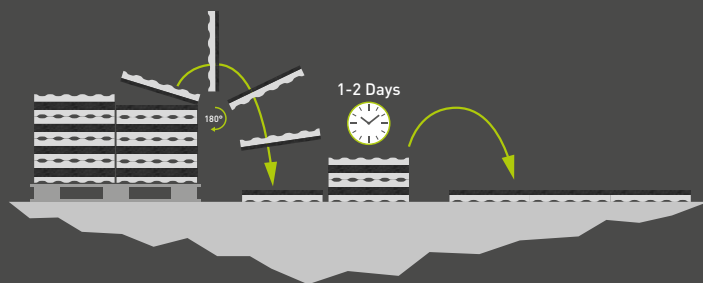
Required tools

gloves, measuring tape, cutter, chalk line, jigsaw and rubber hammer for tiles, pressure roller for rolls



Acclimatisation

The floor covering should be unstacked from the pallet before laying and stored 1-2 days where it will be laid.



Adhesive (700 g/m²), varnish (100 ml/m², only for rolls), cleaner (40 ml/m²)

Please add the required quantity to your order.

Detailed installation instructions for each product

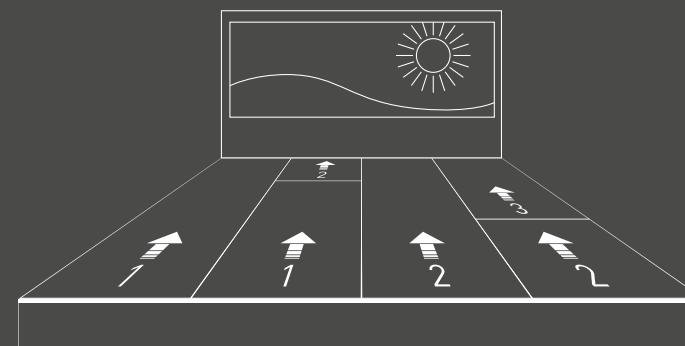
www.kraiburg-relastec.com/sportec/en/downloads

Installation videos on YouTube

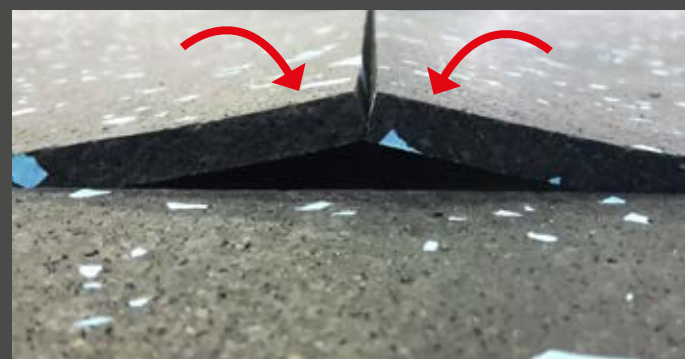


Installation of rolls

SPORTEC® rolls should always be aligned in the same direction to the brightest part of the room.



SPORTEC® rolls should be laid with pressure on the butted joints (close to overlapping). No welding or joint filler is required.

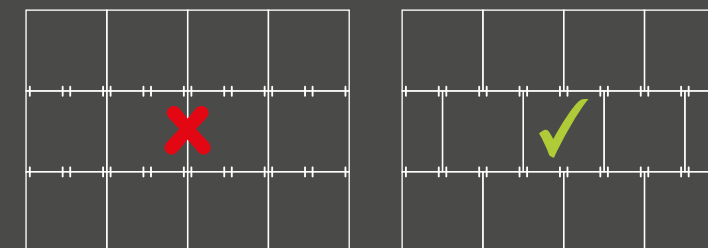


SPORTEC® rolls should be completely glued to the floor. Thicker rolls (from 10 mm thickness) can be fixed with industrial double-sided adhesive tape.



Installation of tiles

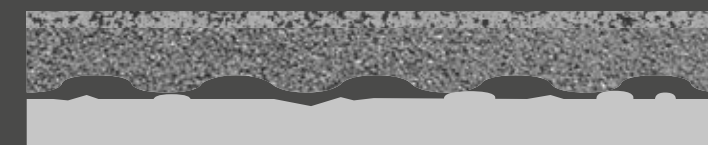
Our tiles are designed for installation without adhesive and should be laid in T-joints. The tiles are connected to each other via pre-installed connectors.



All tiles can be cut with a jigsaw, industrial cutter or table saw.



Slight unevenness of the substrate can be negated as the tiles' substructure compensates for this. Do not hesitate to contact us for more detailed advice.





SUSTAINABILITY

Corporate Carbon Footprint, Product Carbon Footprint, Energy Management, Social and economic sustainability at KRAIBURG Relastec



Recycling of up to 60,000 t material

Every year, we process and recycle up to 60,000 tons of old tyres, closed-cell rubber and rubber production scrap.



Reduction of CO₂ emissions

By using recycled rubber granulate, we save more than 130,000 tonnes of CO₂ emissions per year compared to virgin rubber.



Corporate Carbon Footprint

The CCF was developed in accordance with the Greenhouse Gas Protocol audited.



Coming soon: Product Carbon Footprint

The PCF is measured in accordance with ISO 14067 and ISO 14040/44 audited.



Energy management according to ISO 50001

Our energy management system is identified according to ISO 50001. Energy-relevant topics are taken into account in all processes of the organisation.

ecovadis

Coming soon: Certification by ecovadis

The ecovadis rating covers numerous management systems, including environmental impact and sustainable procurement.



Member of NEW LIFE initiative

The declared aim of NEW LIFE is to demonstrate the advantages of recycled products from End-of-Life Tyres (ELT) to the media, politicians and the general public and to motivate them to act sustainably.

More information:
www.initiative-new-life.de/en



Social sustainability

Acting in accordance with our values such as equal opportunities, social responsibility, respectful treatment and transparency are the foundations for social sustainability in practice.



Economic sustainability

As a family business, KRAIBURG Holding pursues a long-term strategy. Profits generated are used to a significant extent to make our holistic business model ever more efficient and future-proof.



CORPORATE CULTURE

Defined values, social norms and guidelines, for common action and cooperation inside and outside KRAIBURG Relastec.



Equal opportunities

We stand for equal opportunity, diversity, inclusion and religious diversity.



Strong decision-making powers

We ensure speed in process handling, faster technology optimisations and lean processes.



Social responsibility

Fair pay, collective bargaining, further training, career development, work-life integration.



Responsible for our actions

We take responsibility for all decisions and results. Error acceptance and the strong will to correct and learn from them are firmly anchored in our culture.



Respect

We are honest, reliable, respectful and trustworthy towards our colleagues and partners.



Transparency

We practice open, transparent cooperation both inside and outside the company.



WHAT SETS US APART



Internationality

With an export quota of over 50%, we have already exported our products to over 100 countries.



Easy complaint management

Transparent and optimised processes ensure rapid processing.



Personal contact persons

We do not hide behind support hotlines and contact forms. With us, you have personal, competent contact persons.



Flexibility with customer requirements

We offer our partners customised options for packaging, labelling and delivery, packaging, labelling and delivery.



Product quality

Our products meet the highest quality standards. They are durable, a perfect fit and made from high-quality raw materials.



Long-term relationships

We maintain long-term relationships with our customers and suppliers based on mutual respect and fairness.



Innovation and product design

We continuously develop new products according to the requirements of our customers and the market.



Marketing support

We provide you with the best possible support in the form of images or in the design of your documents.

» **MORE FROM YOUR FLOOR**



Sports flooring and elastic layers
made from rubber granules

KRAIBURG Relastec GmbH & Co.KG
Fuchsberger Straße 4 · D-29410 Salzwedel

Sales International:
Tel. +49 (0) 8683 701 -340
Fax +49 (0) 8683 701 -4340
sportec@kraiburg-relastec.com
www.sportec-flooring.com

No liability accepted for errors or omissions. Subject to changes without prior notice.
© KRAIBURG Relastec GmbH & Co. KG 2023

